

User Manual

Scrubber 50[V4.2_Disc Brush]

AIO

Gausium Technical Service and Operations Center

Change Records:

Document Version	Last Update	Change Type	Software Version Basis	Machine Version Basis	Revised Content	Revised by
CN_V1.0	24.07.26	A	A2-00-1	V4.2 Disc Brush	V4.1/V4.2 Disc Brush(AIO)	Nine

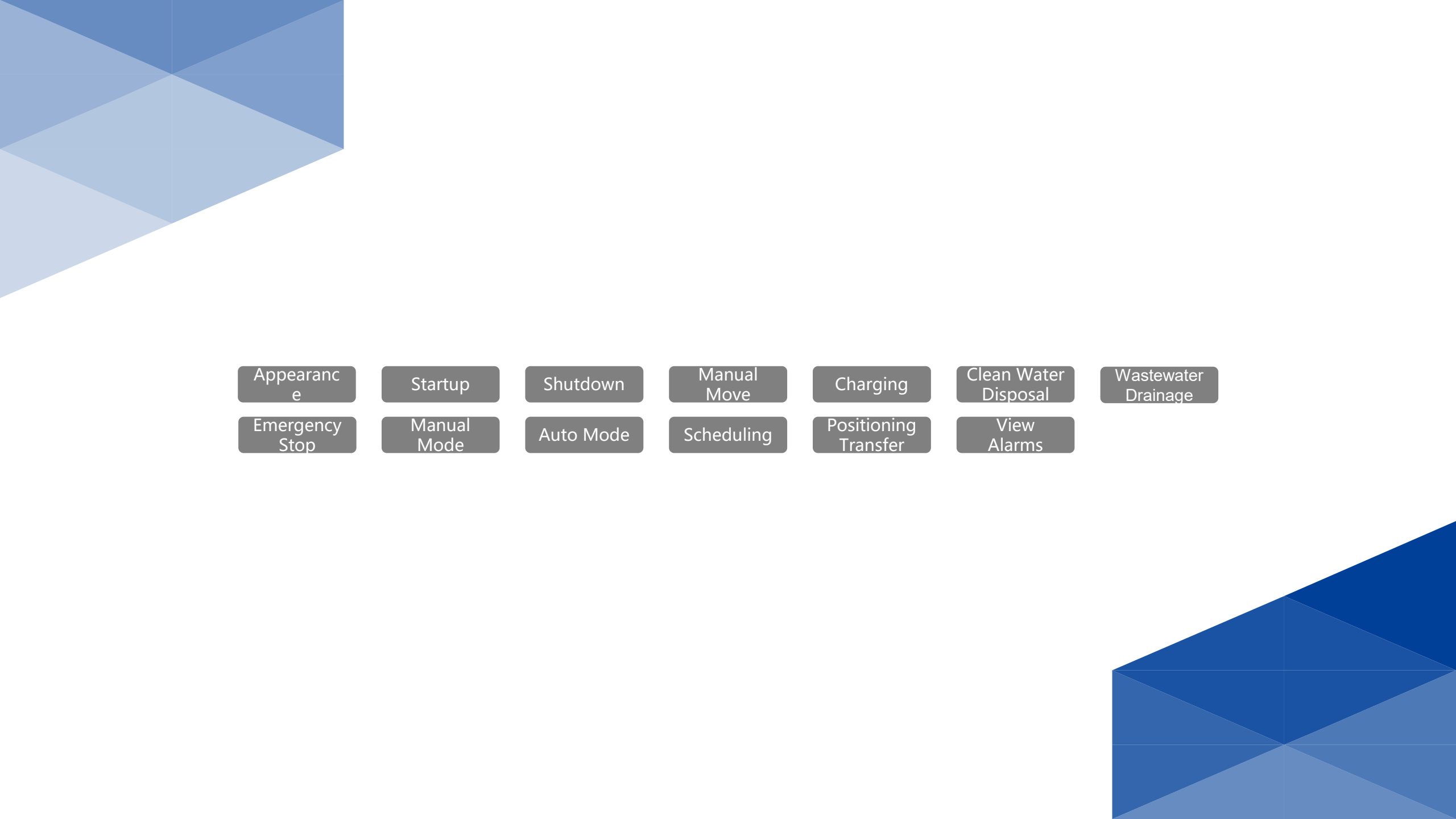
Change Types: A = Add; M = Modify; D = Delete.

Software Version Basis: The software version used during the development of the document. Differences in software versions may affect certain operations on the device.

Machine Version Basis: The machine version used during the development of the document. Differences in machine versions may affect certain operations on the device.

Disclaimer: This document is for reference only. If there are discrepancies between the document and the actual situation, please consult your Gausium contact engineer for the correct operational procedures.

* Gausium continuously upgrades and optimizes its software to ensure users enjoy a more seamless and enhanced experience.



Appearance	Startup	Shutdown	Manual Move	Charging	Clean Water Disposal	Wastewater Drainage
Emergency Stop	Manual Mode	Auto Mode	Scheduling	Positioning Transfer	View Alarms	

Appearance – Front Side

Top Lid

Front Tilt Camera
(Sensor)

Front Door

LiDAR (Sensor)

Small Aperture Laser
(Sensor)

Left and Right Cameras
(Sensors)

Anti-Collision Bumper



Appearance - Rear Side

Handle

Key Switch

Automatic Water Inlet

Rear LiDAR (Sensor)

Rear Camera (Sensor)

Automatic Charging
Electrodes

Automatic Drain Outlet

Squeegee Assembly



Appearance - Left Side



Manual Drain Hose

Left Door

Anti-Collision Bumper -
Left

Appearance - Right Side



Right Door

Anti-Collision Bumper -
Right

Appearance - Top

Emergency Stop Button

Touchscreen



Startup



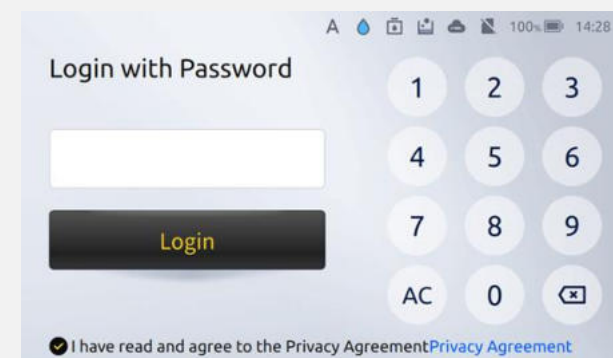
Precautions:

1. If the air switch is in the “On” position and the key switch is set to “ON” but the machine still won’t start, try using the charger to charge the battery, which may activate the battery.



Press the power button.

1



1. Enter the login password, which is set to **123456** by default.
2. Click **Login**.

3



Turn the key switch to the “ON” position and hold it there until the machine’ s screen lights up.

2

Shutdown



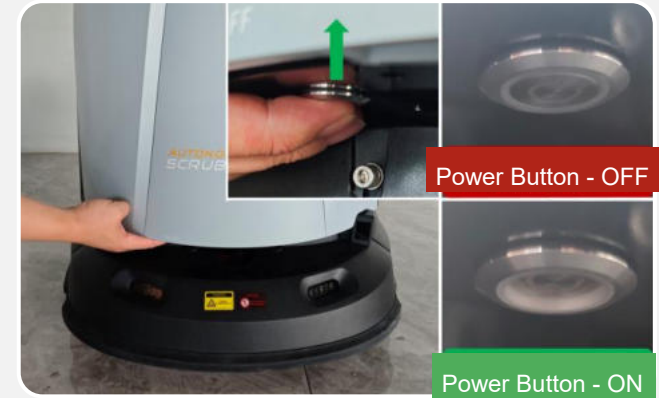
Precautions:

1. Do not turn off the power button directly while the machine is on. Before turning off the power button, you must first use the key switch to shut down the machine ;
2. **Precautions for Long-Term Shutdown and Storage:**
 - ① After shutting down normally, please remove all consumables, including the squeegee blades and brush pads;
 - ② Perform a comprehensive maintenance check on the machine;
 - ③ Charge the machine once a



Turn the key switch to the "ON" position and hold it there until the machine's screen turns off;

1



Turn off the power button;

2

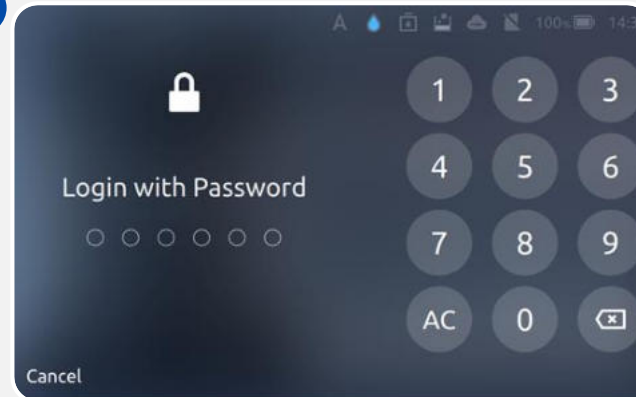
Manual Move



Precautions:

1. Do not forcefully push the machine if it is in automatic mode.

1



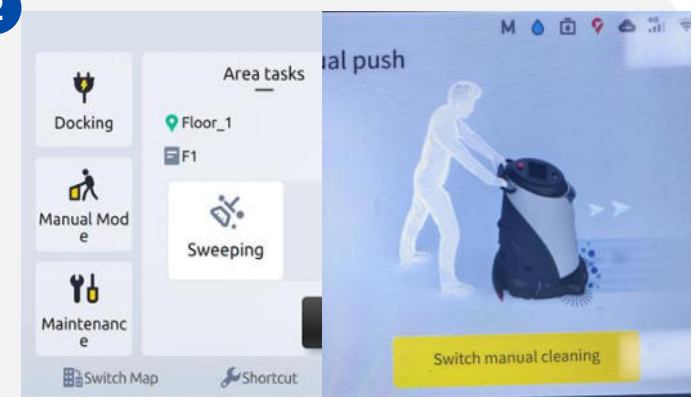
Log in to the machine with a password;

3



Use the handle to push the machine. If the machine cannot be pushed, check the emergency stop button to ensure it has not been activated.

2



Tap "Manual Mode" to switch the machine mode to manual;

Appearance

Startup

Shutdown

Manual
Move

Charging

Clean Water
Disposal

Wastewater
Drainage

Emergency
Stop

Manual
Mode

Auto Mode

Scheduling

Positioning
Transfer

View
Alarms

Scrubber 50 User Manual

Manual Charging

Method 1: Wired Charging



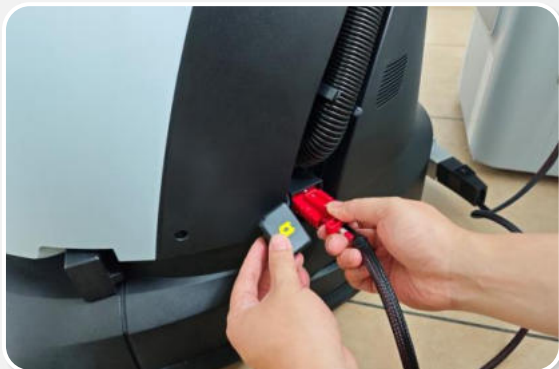
Method 2: Manual Docking



Auto Charging

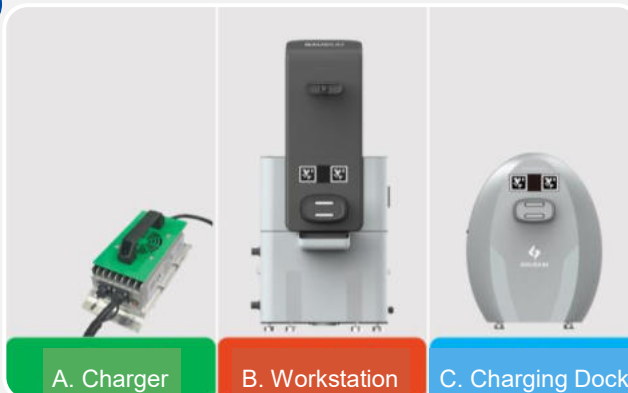


Wired Charging



Precautions:
None

1



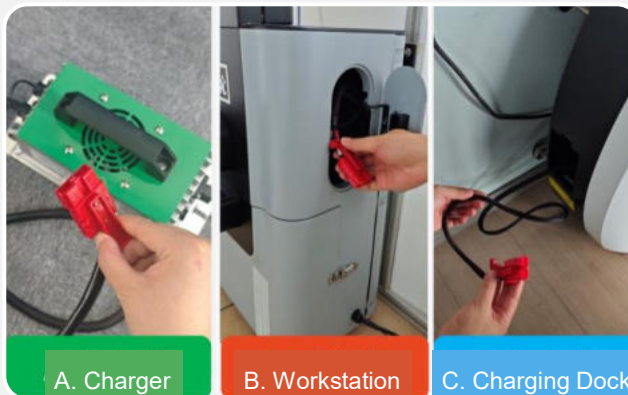
A. Charger

B. Workstation

C. Charging Dock

ABC. Manually move the machine next to the charger/ workstation/ charging dock. For instructions on how to Manually move the machine, refer to: [Manual Move](#).

3



A. Charger

B. Workstation

C. Charging Dock

A. Hold the red charging plug of the charger.
B. Take the red charging plug from the left side door of the workstation.
C. Take the red charging plug from the right side door of the charger.

2



Pull out the dustproof rubber cover from the charging port on the left side of the machine.

4



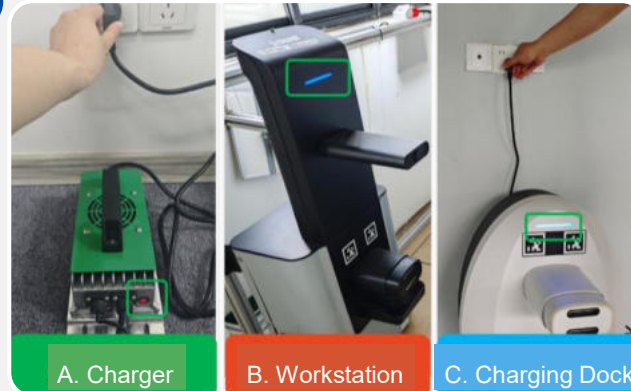
Insert the red charging plug into the machine's charging port.

Wired Charging



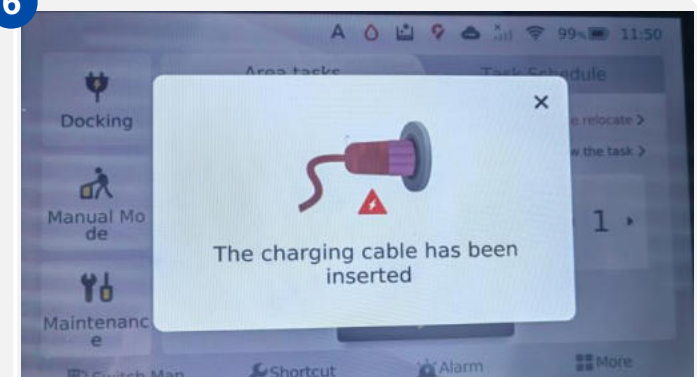
Precautions:
None

5



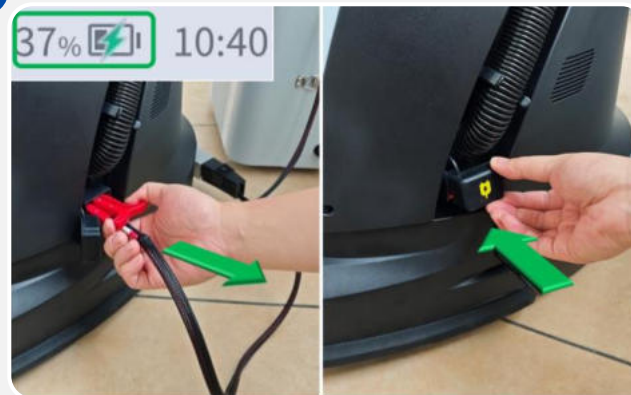
ABC. Connect the power supply to the charger/workstation/charging dock.

6



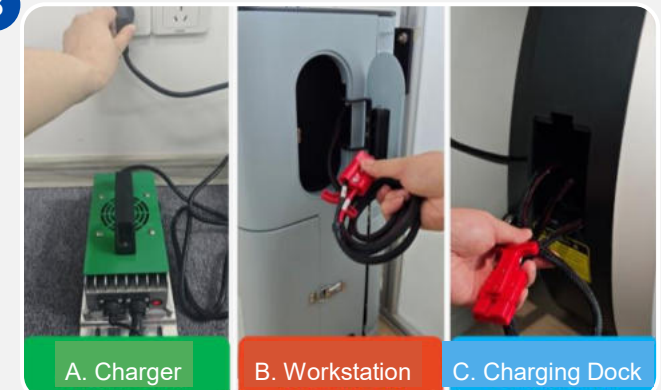
Check the machine's screen to confirm that the robot is in charging mode.

7



1. Once the battery is fully charged to 100%, remove the red charging plug.
2. Reattach the dustproof rubber cover to the charging port.

8



A. Unplug the power supply plug from the charger and store the charger properly.
B/C. Organize the charging plug's cable, then place it back inside the side door of the charging dock/workstation, and finally close the side door.

Manual Docking



Precautions:
None

1



A. Charging Dock



B. Workstation

Manually move the machine next to the charging dock/workstation.
For instructions on how to Manually move the machine, refer to: [Manual Move](#);

3



A. Charging Dock



B. Workstation

Push the machine so that its charging electrodes make contact with the charging dock/workstation electrodes. Release the machine once the light strip on the charging dock/workstation turns green.

2



A. Charging Dock



B. Workstation

Rotate the machine to align its charging electrodes with the electrodes on the charging dock.

4



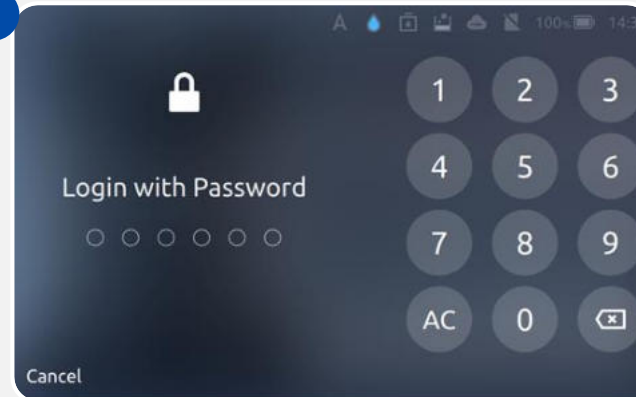
Check the machine's screen to confirm that the robot is charging.

Auto Charging



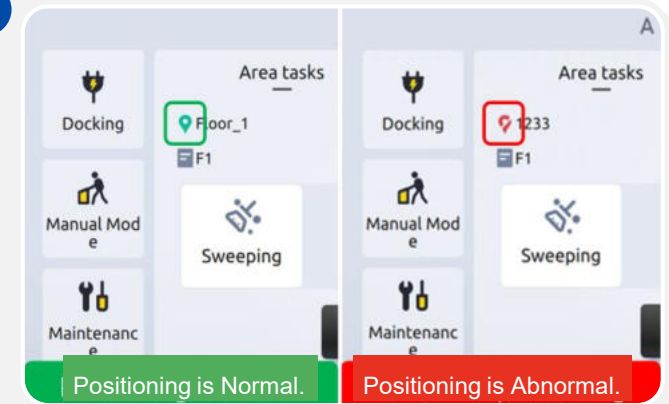
Precautions:
None

1



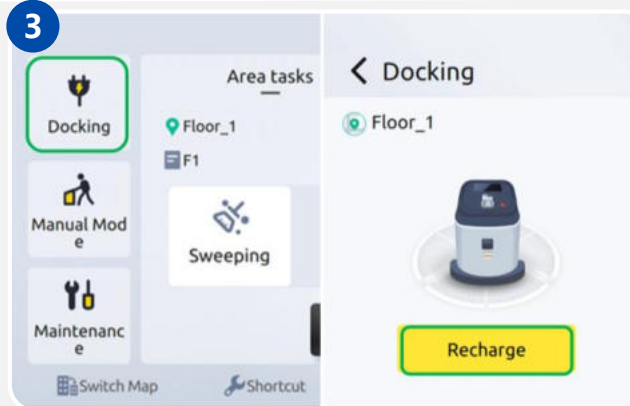
Log in to the machine using the password.

2



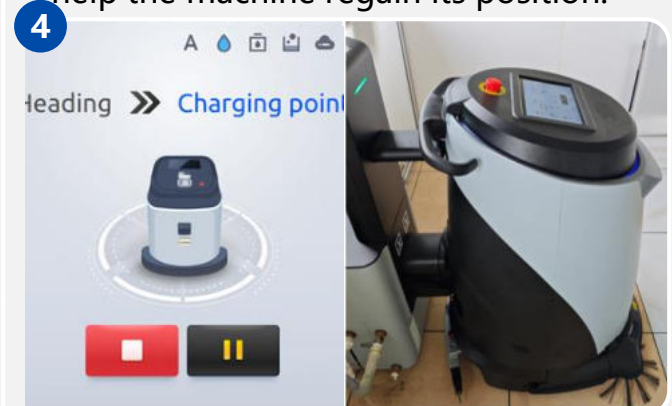
Check the Screen: Look at the machine's location icon to confirm that the positioning is normal. If the positioning is abnormal, refer to: [Positioning Transfer](#); help the machine regain its position.

3



1. Tap "Docking."
2. Tap "Recharge," and the machine will automatically navigate back to the charging dock/workstation.

4



1. The machine will automatically navigate back to the charging dock/workstation and charge itself.
2. Charging in progress.

Appearance

Startup

Shutdown

Manual
Move

Charging

Clean Water
Disposal

Wastewater
Drainage

Emergency
Stop

Manual
Mode

Auto Mode

Scheduling

Positioning
Transfer

View
Alarms

Scrubber 50 User Manual

Add Clean Water

Method 1: Manual Water Filling



Method 2: Automatic Water Filling



Drain Clean Water

Manual Water Drainage



Manual Water Filling



Precautions:

1. When adding water, do so slowly to prevent splashing water outside the tank.
2. Pay attention to the water level in the clean water tank. Stop adding water when it reaches the maximum level line.

1



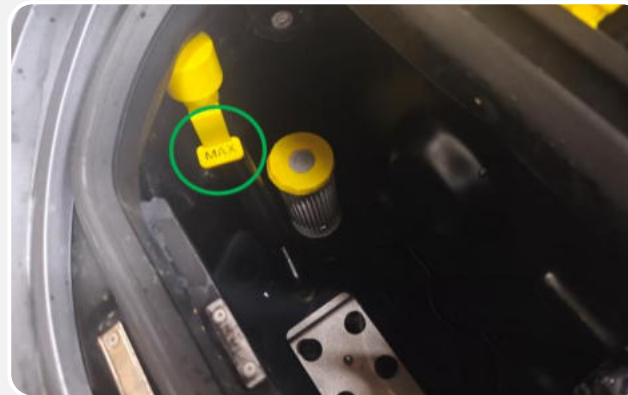
1. Open the top lid upwards.
2. Remove the secondary water tank by lifting it upwards.

2



Use a measuring bucket to pour clean water into the clean water tank. Alternatively, you can use a water gun or hose to fill the clean water tank.

3



While filling the tank, monitor the water level inside. Stop adding water when the level reaches the maximum mark (MAX).

4



1. Reinsert the secondary water tank.
2. Close the top lid.

Appearance

Startup

Shutdown

Manual
Move

Charging

Clean Water
DisposalWastewater
DrainageEmergency
StopManual
Mode

Auto Mode

Scheduling

Positioning
TransferView
Alarms

Scrubber 50 User Manual

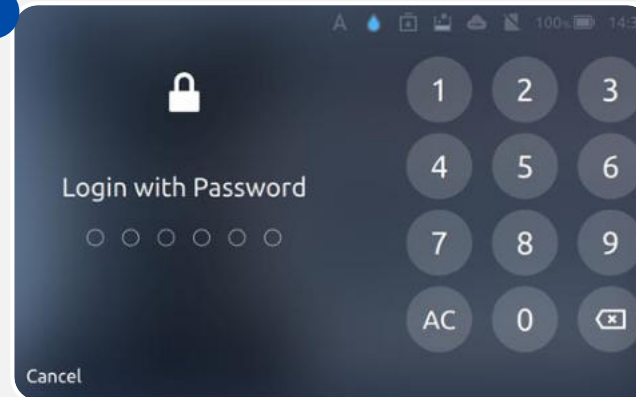
Automatic Water Filling



Precautions:

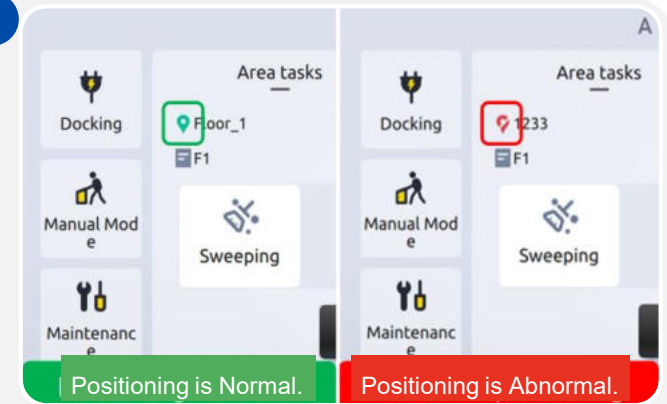
Automatic water filling can only be performed once the workstation setup is complete.

1



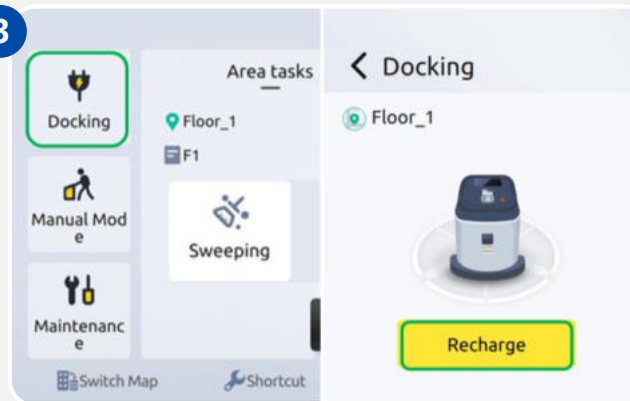
Log in to the machine using the password.

2



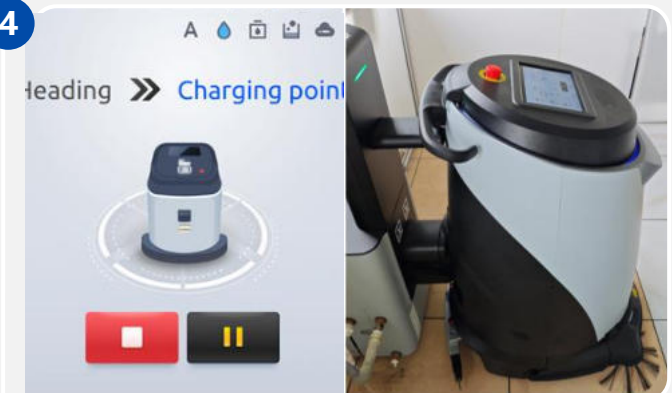
Check the Screen: Look at the machine's location icon to confirm that the positioning is normal. If the positioning is abnormal, refer to: [Positioning Transfer](#); help the machine regain its position.

3



1. Tap "Docking."
2. Tap "Recharge," and the machine will automatically navigate back to the charging dock/workstation.

4



1. The machine will automatically navigate back to the workstation and refill itself with clean water.
2. Refueling in progress (charging, adding clean water, draining wastewater).;

Appearance

Startup

Shutdown

Manual
Move

Charging

Clean Water
DisposalWastewater
DrainageEmergency
StopManual
Mode

Auto Mode

Scheduling

Positioning
TransferView
Alarms

Scrubber 50 User Manual

Manual Water Drainage



Precautions:
None

1



Manually move the machine to a location where manual water drainage is possible.

2



1.Remove the drain hose, keeping the hose end upright and higher than the wastewater tank's liquid level, then open the hose cap.

2.Tilt the drain hose outward to begin

3



Place the drain hose over the floor drain and wait for the wastewater to be fully drained.

4



1.Open the top lid upwards.
2.Remove the secondary water tank by lifting it upwards.

Appearance

Startup

Shutdown

Manual
Move

Charging

Clean Water
DisposalWastewater
DrainageEmergency
StopManual
Mode

Auto Mode

Scheduling

Positioning
TransferView
Alarms

Scrubber 50 User Manual

Manual Water Drainage



Precautions:
None

5



Pull up and turn the yellow bolt inside the clean water tank counterclockwise to open the water drain plug at the bottom of the tank. Wait for the clean water to fully drain.

6



After the clean water has fully drained, rotate the yellow bolt inside the clean water tank clockwise to close the water drain plug at the bottom of the tank.

7



- 1.Reinsert the secondary water tank.
- 2.Close the top lid.

8



- 1.Close the drain hose cap.
- 2.Store the drain hose.

Appearance

Startup

Shutdown

Manual
Move

Charging

Clean Water
Disposal

Wastewater
Drainage

Emergency
Stop

Manual
Mode

Auto Mode

Scheduling

Positioning
Transfer

View
Alarms

Scrubber 50 User Manual

Manual Wastewater Drainage



Automatic Wastewater Drainage



Appearance

Startup

Shutdown

Manual
Move

Charging

Clean Water
DisposalWastewater
Drainage

Scrubber 50 User Manual

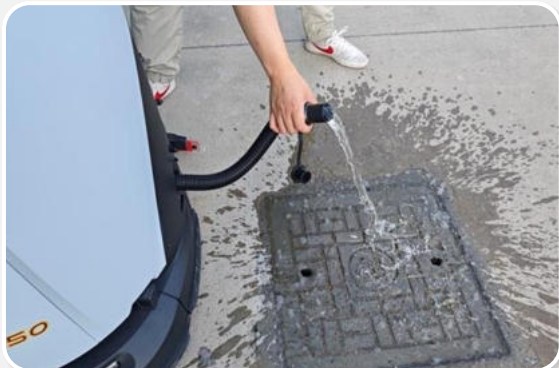
Emergency
StopManual
Mode

Auto Mode

Scheduling

Positioning
TransferView
Alarms

Manual Wastewater Drainage



Precautions:
None

1



Manually move the machine to a location where manual water drainage is possible.

2



1.Remove the drain hose, keeping the hose end upright and higher than the wastewater tank's liquid level, then open the hose cap.

2.Tilt the drain hose outward to begin

3



Place the drain hose over the floor drain and wait for the wastewater to be fully drained.

4



1.Once the wastewater has fully drained, close the drain hose cap.
2.Store the drain hose.

Appearance

Startup

Shutdown

Manual
Move

Charging

Clean Water
DisposalWastewater
Drainage

Scrubber 50 User Manual

Emergency
StopManual
Mode

Auto Mode

Scheduling

Positioning
TransferView
Alarms

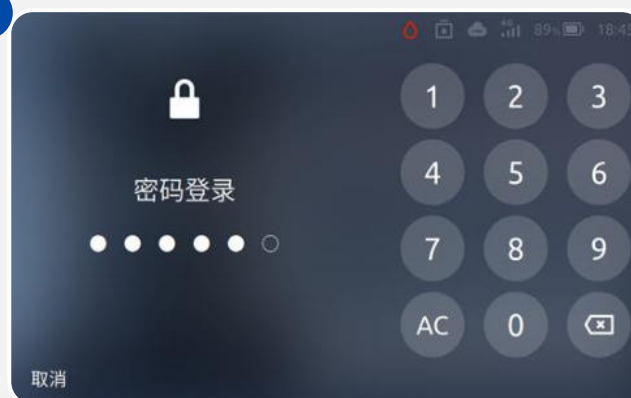
Automatic Wastewater Drainage



Precautions:

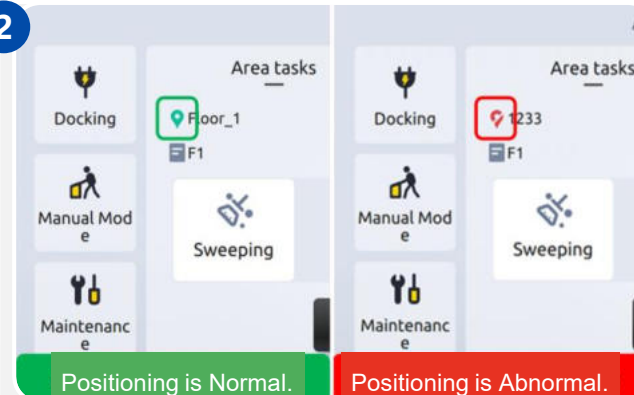
Automatic wastewater drainage can only be performed once the workstation setup is complete.

1



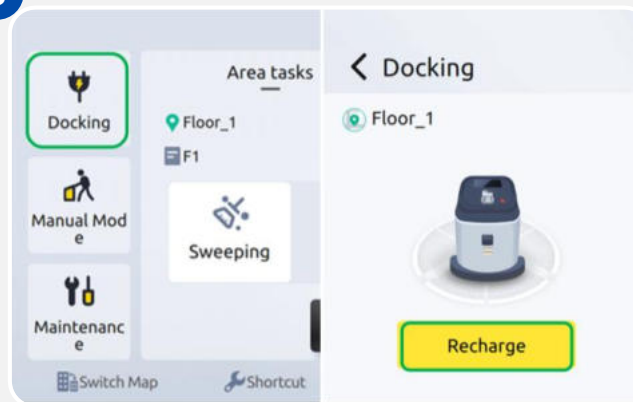
Log in to the machine using the password.

2



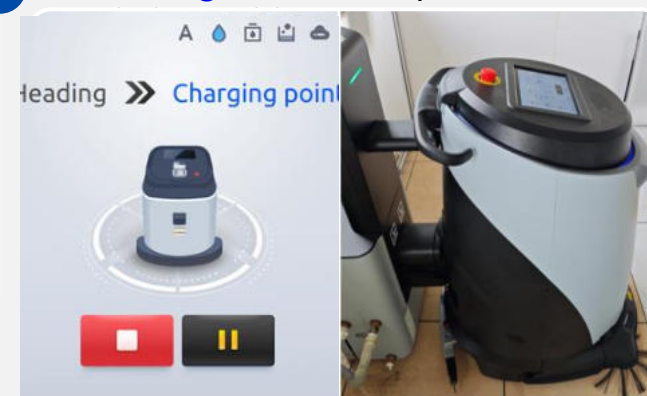
Check the Screen: Look at the machine's location icon to confirm that the positioning is normal. If the positioning is abnormal, refer to: [Positioning Transfer](#); help the machine

3



1. Tap "Docking."
2. Tap "Recharge," and the machine will automatically navigate back to the charging dock/workstation.

4



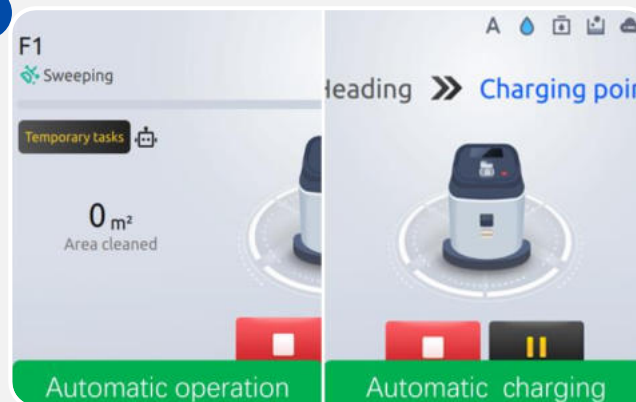
1. The machine will automatically navigate back to the workstation and refill itself with clean water.
2. Refueling in progress (charging, adding clean water, draining wastewater).;

Emergency Stop



Precautions:
None

1



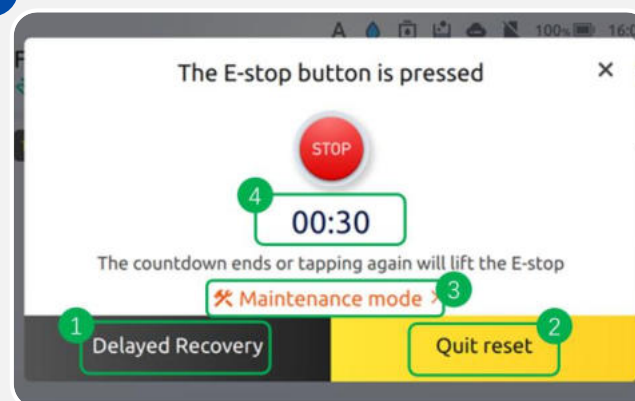
The machine is in the process of performing automatic cleaning tasks or automatically returning to the charging dock/workstation.

2



During automatic cleaning tasks or while the machine is automatically returning to the charging dock/workstation, if an emergency occurs, press the emergency stop button to bring the machine to an emergency stop.

3



In emergency stop mode, the machine's drive motors are set to a locked state by default, preventing manual movement. To Manually move the machine, switch to maintenance mode and then enter Manual Moving mode.

4



Rotate the button clockwise to exit the emergency stop mode.

Appearance

Startup

Shutdown

Manual
Move

Charging

Clean Water
DisposalWastewater
DrainageEmergency
Stop**Manual
Mode**

Auto Mode

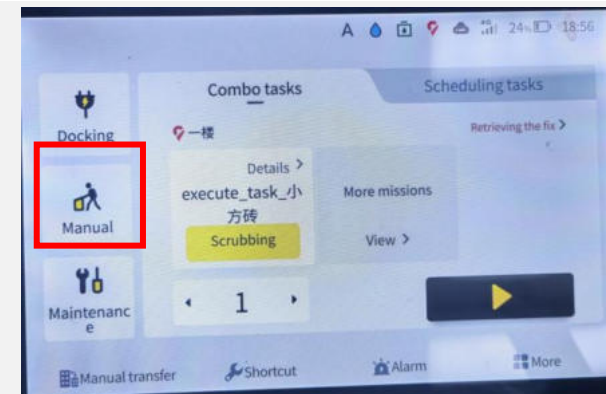
Scheduling

Positioning
TransferView
Alarms**Scrubber 50 User
Manual****Manual Mode****Precautions:**

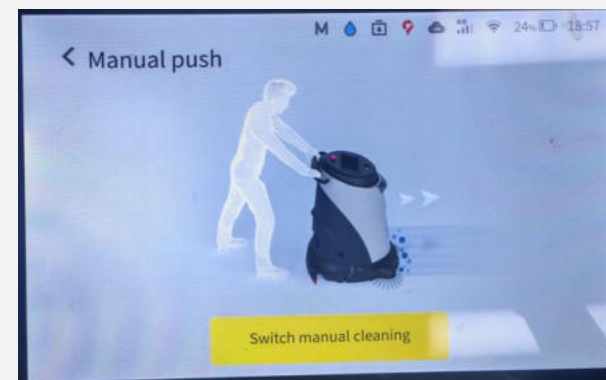
Before switching to different cleaning modes, verify that all cleaning accessories are properly installed.

Cleaning Accessories	Cleaning Mode	Cleaning	Dust Pusher
Filter Hair		Essential	Essential
HEPA		Essential	Non-essential
Sewage Tank Filter Bag		Essential	Non-essential
Clean Water Tank Stainless Steel Filter Mesh		Essential	Non-essential
Sewage Tank Stainless Steel Filter Mesh		Essential	Non-essential
Squeegee		Essential	—
Dust Pusher		—	Essential
Brush Roll		Essential	Non-essential

Install the cleaning accessories correctly according to the cleaning mode and the accessory configuration chart.

1

Tap "Manual Mode."

2

Tap "Switch to Manual Cleaning."

3

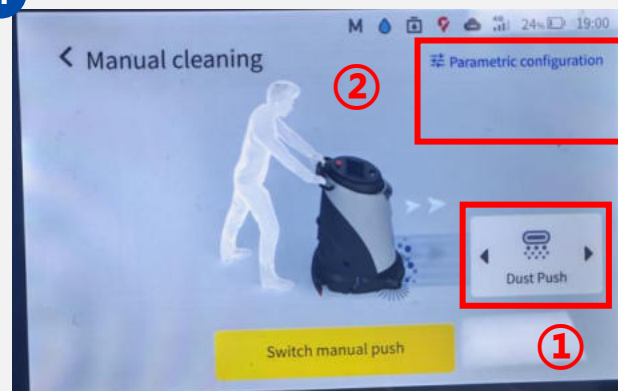
Manual Mode



Precautions:

Before switching to different cleaning modes, verify that all cleaning accessories are properly installed.

4



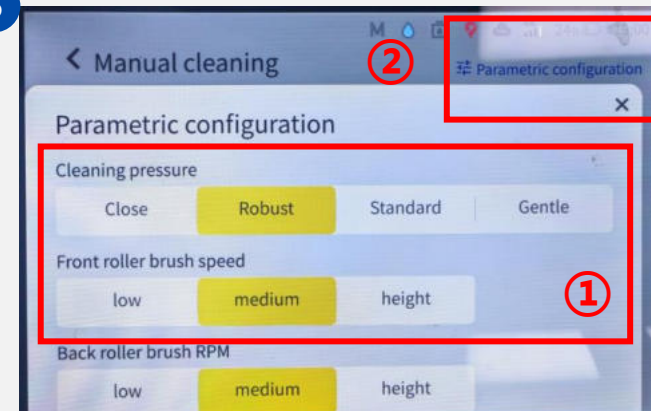
1. Select the cleaning mode.
2. Tap "Device Level."

6



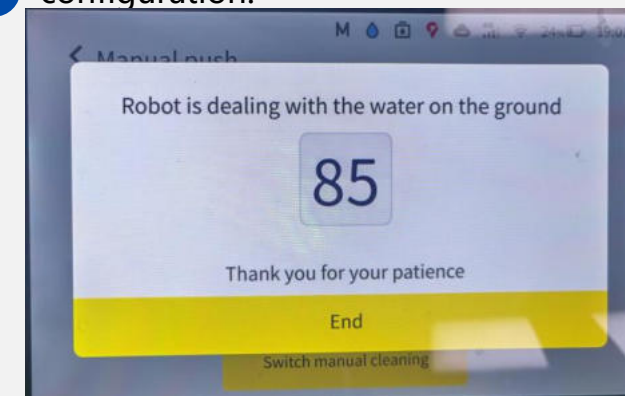
Manually move the machine to the area requiring cleaning.
If the machine cannot be moved, check the emergency stop button to ensure it is not activated.

5



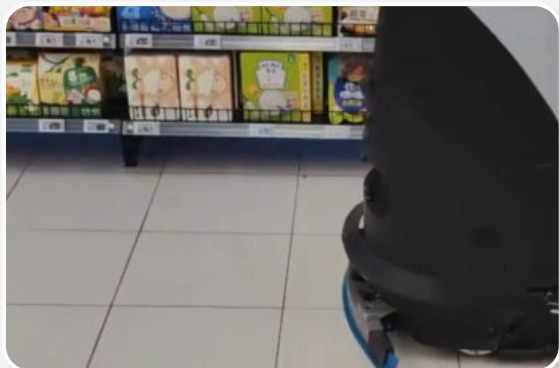
1. Adjust the cleaning settings, such as suction power and spray level, according to your needs.
2. Tap "x" to close the Device Level configuration.

7



1. After cleaning is complete, tap "<" to exit manual cleaning mode.
2. If the scrubbing mode was used, the machine will handle any residual water on the floor. In this case, continue to move the machine forward for a short distance.

Auto Mode - Task List

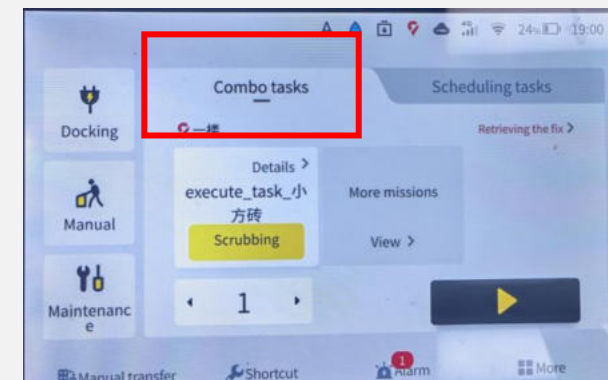


Precautions:

Before switching to different cleaning modes, verify that all cleaning accessories are properly installed.

Cleaning Accessories	Cleaning Mode	Cleaning	Dust Pusher
Filter Hair		Essential	Essential
HEPA		Essential	Non-essential
Sewage Tank Filter Bag		Essential	Non-essential
Clean Water Tank Stainless Steel Filter Mesh		Essential	Non-essential
Sewage Tank Stainless Steel Filter Mesh		Essential	Non-essential
Squeegee		Essential	—
Dust Pusher		—	Essential
Brush Roll		Essential	Non-essential

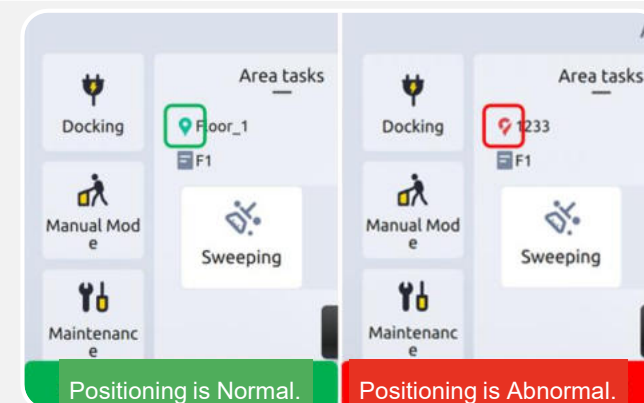
Install the cleaning accessories correctly according to the cleaning mode and the accessory configuration chart.



Tap "Task List."

If "Task List" is not displayed on the screen, refer to: [Auto Mode - Area Tasks](#) for instructions.

2

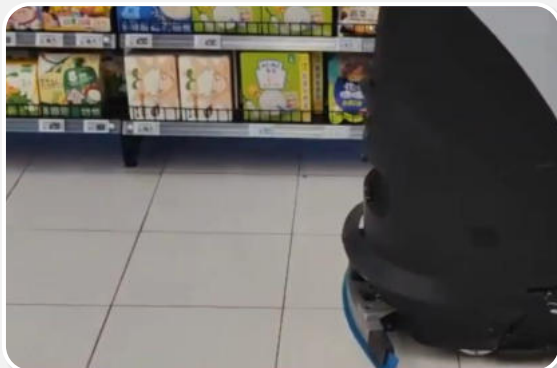


Check the Screen: Look at the machine's location icon to confirm that the positioning is normal. If the positioning is abnormal, refer to: [Positioning Transfer](#); help the machine regain its position.

3

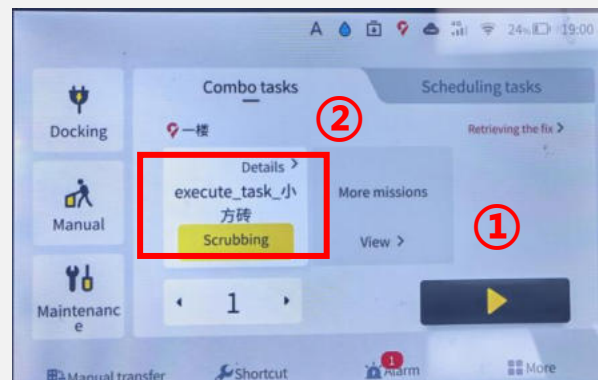
1

Auto Mode - Task List



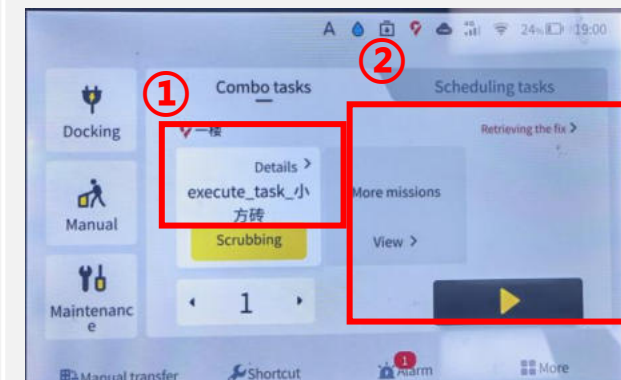
Precautions:

Before switching to different cleaning modes, verify that all cleaning accessories are properly installed.



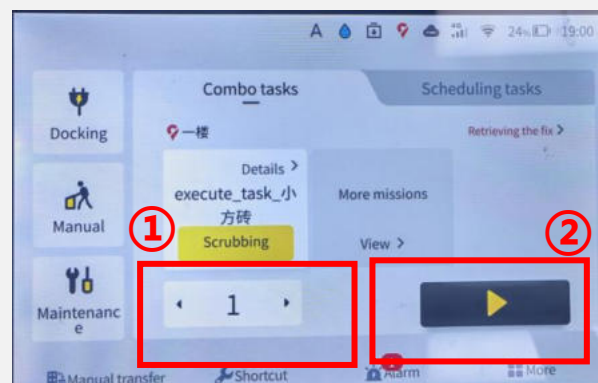
1. Swipe left or right on the task list to find the required combined task by its name.
2. Tap the desired tasks.

4



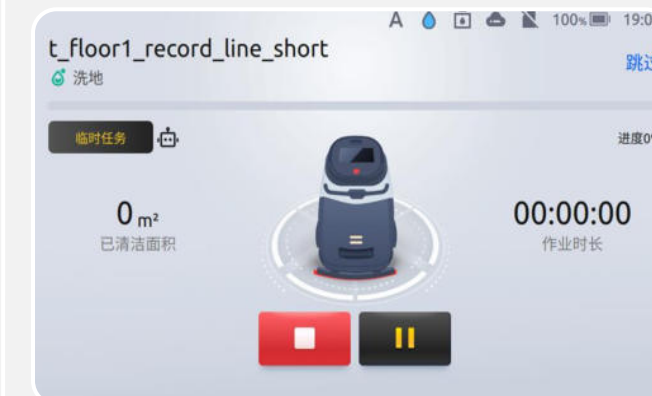
1. Tap the yellow button to adjust the cleaning mode.
- 2&3. Select the desired cleaning mode, then tap "Confirm."

5



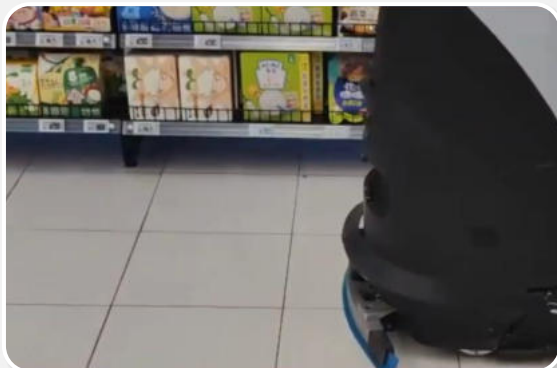
1. Set the number of cycles for the tasks as needed.
2. Tap the start button to initiate the task.

6



The machine starts automatic operation.

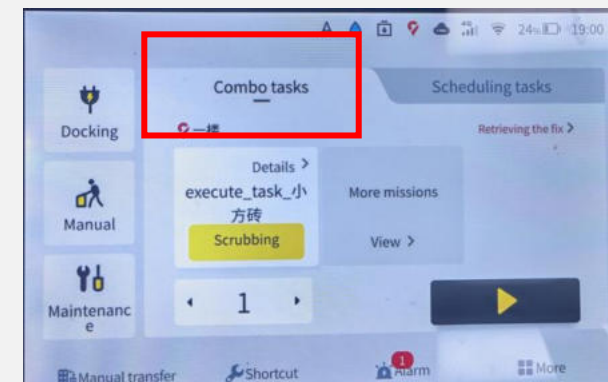
7

**Auto Mode - Area
Tasks****Precautions:**

Before switching to different cleaning modes, verify that all cleaning accessories are properly installed.

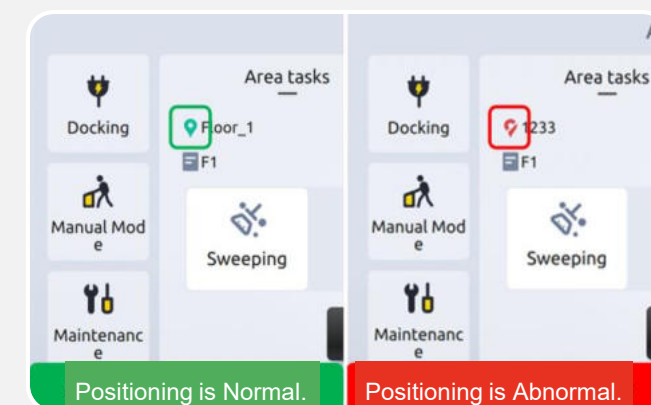
Cleaning Accessories	Cleaning Mode	Cleaning	Dust Pusher
Filter Hair		Essential	Essential
HEPA		Essential	Non-essential
Sewage Tank Filter Bag		Essential	Non-essential
Clean Water Tank Stainless Steel Filter Mesh		Essential	Non-essential
Sewage Tank Stainless Steel Filter Mesh		Essential	Non-essential
Squeegee		Essential	—
Dust Pusher		—	Essential
Brush Roll		Essential	Non-essential

Install the cleaning accessories correctly according to the cleaning mode and the accessory configuration chart.



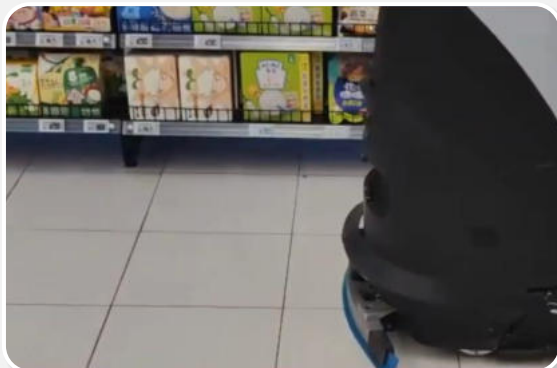
Tap "Area Tasks."

If "Area Tasks" is not displayed on the screen, refer to: [Auto Mode - Task List](#) for instructions.



Check the Screen: Look at the machine's location icon to confirm that the positioning is normal. If the positioning is abnormal, refer to: [Positioning Transfer](#); help the machine regain its position.

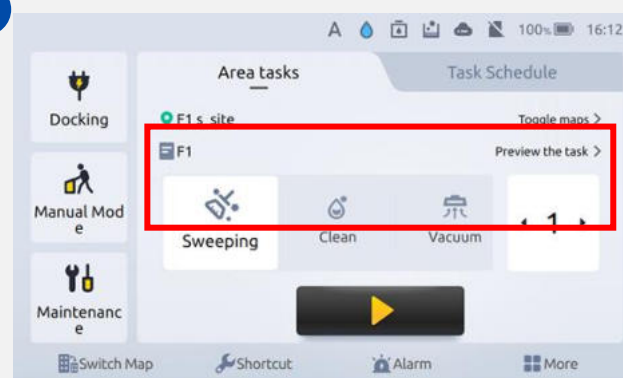
Auto Mode - Area Tasks



Precautions:

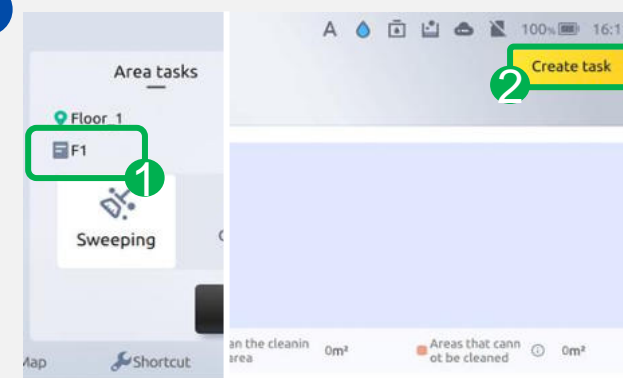
Before switching to different cleaning modes, verify that all cleaning accessories are properly installed.

4



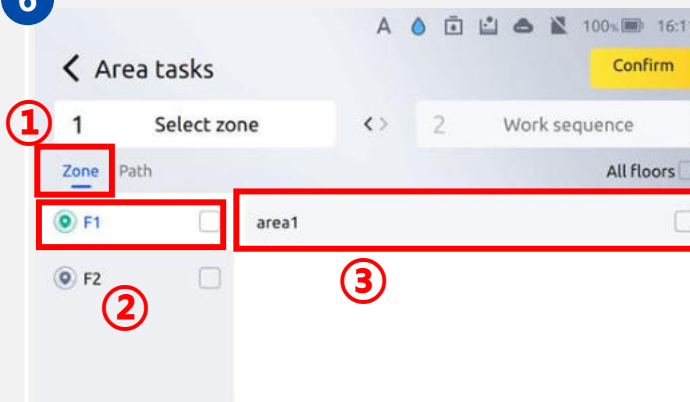
Tap the task bar.

5



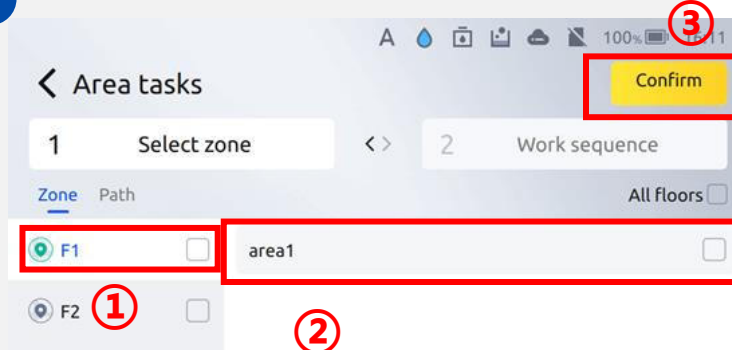
Tap "Create Task."

6



Select the areas to be cleaned as needed.
Tap "Zone," then tap "Map," and select the names of the areas to be cleaned.

7



needed.
Tap "Path," then tap "Map," select the names of the paths to be cleaned, and tap "Next."

Appearance

Startup

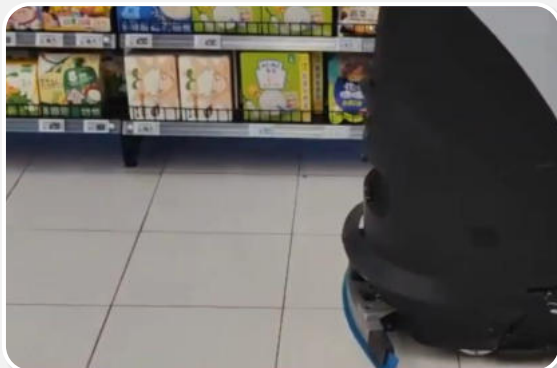
Shutdown

Manual
Move

Charging

Clean Water
DisposalWastewater
DrainageEmergency
StopManual
Mode**Auto
Mode**

Scheduling

Positioning
TransferView
Alarms**Scrubber 50 User
Manual****Auto Mode - Area
Tasks****Precautions:**

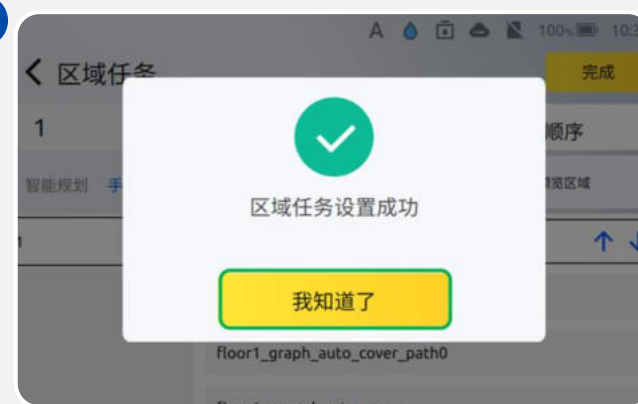
Before switching to different cleaning modes, verify that all cleaning accessories are properly installed.

8



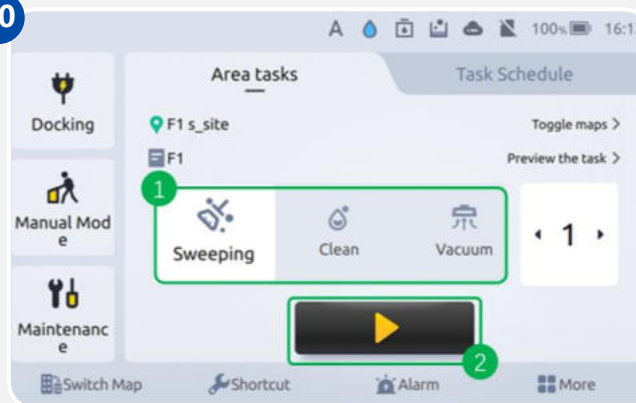
Tap "Completed."

9



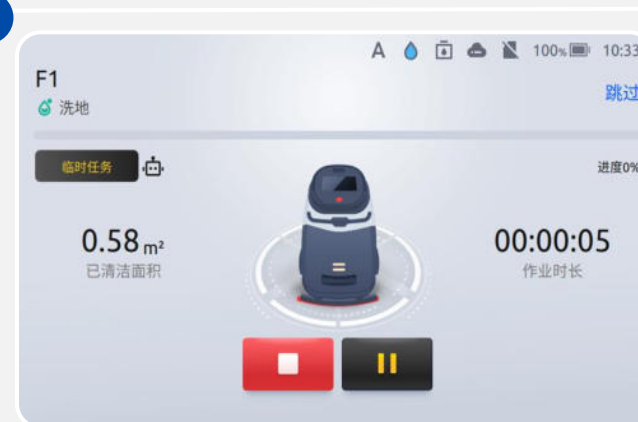
Tap "Got it."

10



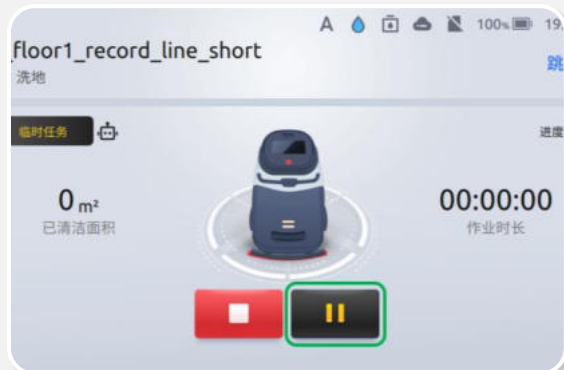
1. Tap "Cleaning Mode."
2. Set the number of cycles for this task.
3. Tap the start button to initiate the task.

11



The machine starts automatic operation.

Pause/End Auto Mode

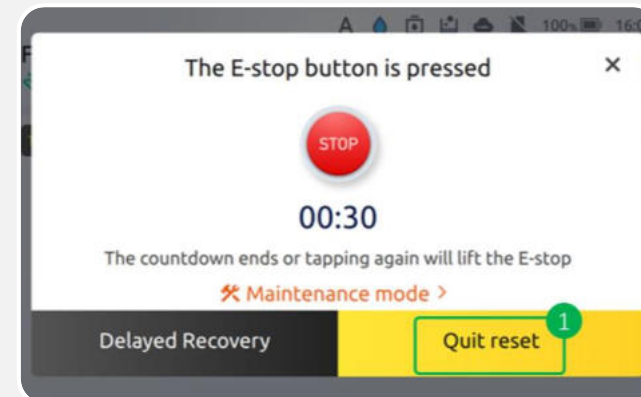


Precautions:
None



If the machine is in automatic operation, press the emergency stop button.

1



If the screen is locked, first log in with your password. After logging in, tap "x" to dismiss the emergency stop reminder.

2



At this point, the automatic operation has been paused.
To end the automatic operation early, tap the "End" button on the screen.

3



To resume the automatic operation after pausing, first rotate the emergency stop button clockwise to reset it, then tap the "Resume" button on the screen.

4

Appearance

Startup

Shutdown

Manual
Move

Charging

Clean Water
Disposal

Wastewater
Drainage

Emergency
Stop

Manual
Mode

Auto Mode

Scheduling

Positioning
Transfer

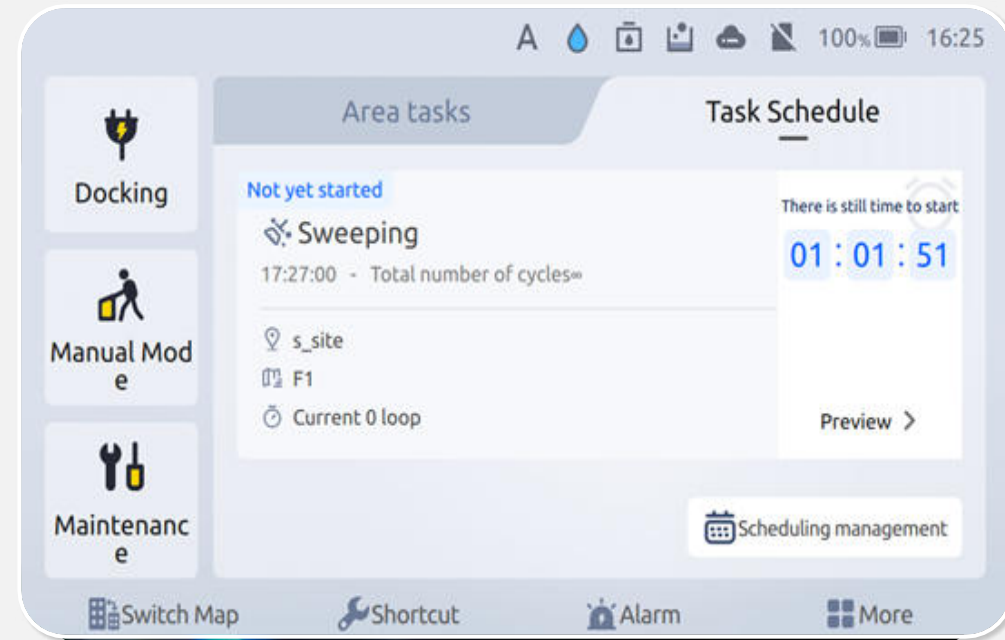
View
Alarms

Scrubber 50 User Manual

Method 1: Mobile App



Method 2: Robot Touchscreen



Appearance

Startup

Shutdown

Manual
Move

Charging

Clean Water
DisposalWastewater
DrainageEmergency
StopManual
Mode

Auto Mode

Scheduling

Positioning
TransferView
Alarms

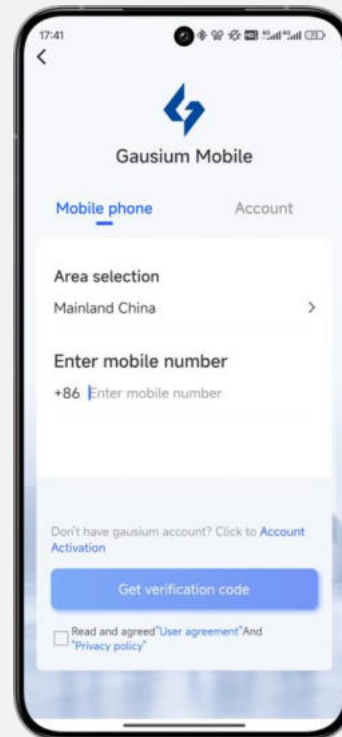
Scrubber 50 User Manual

Create Schedules - Mobile App



Precautions:

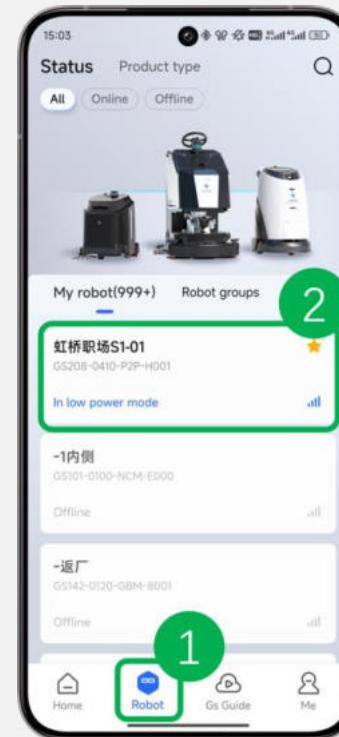
To set Do Not Disturb mode, select "Breaks" as the scheduling option when creating the schedule.



Open the "Gausium Mobile" app and log in with your account.

If you do not have an account, please contact Gausium's after-sales engineer.

1



1. Tap "Robot."
2. In the list of your robots, find and select the corresponding robot.

If the robot is not listed, please contact Gausium's after-sales engineer.

2



Tap the icon ☰ in the top right corner.

3

Appearance

Startup

Shutdown

Manual
Move

Charging

Clean Water
DisposalWastewater
DrainageEmergency
StopManual
Mode

Auto Mode

Scheduling

Positioning
TransferView
Alarms

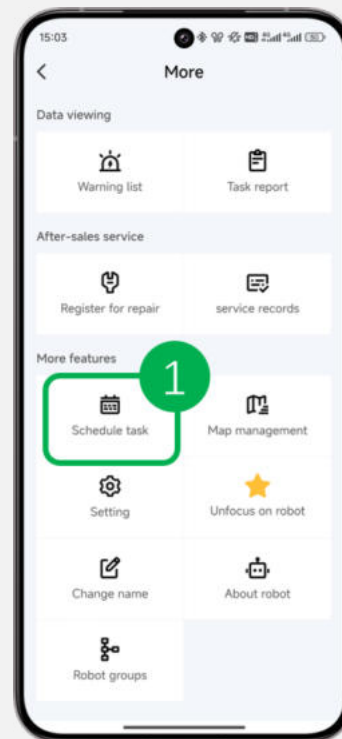
Scrubber 50 User Manual

Create Schedules - Mobile App

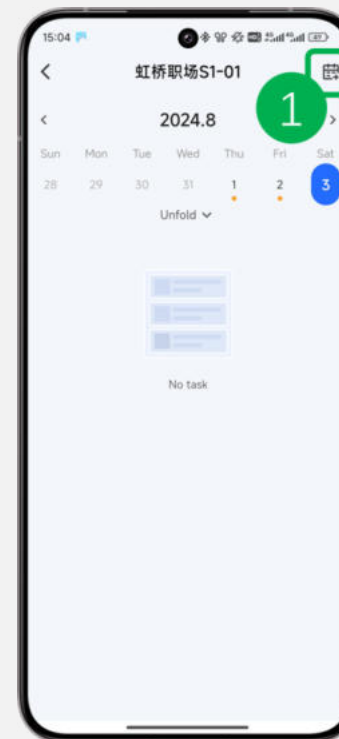


Precautions:

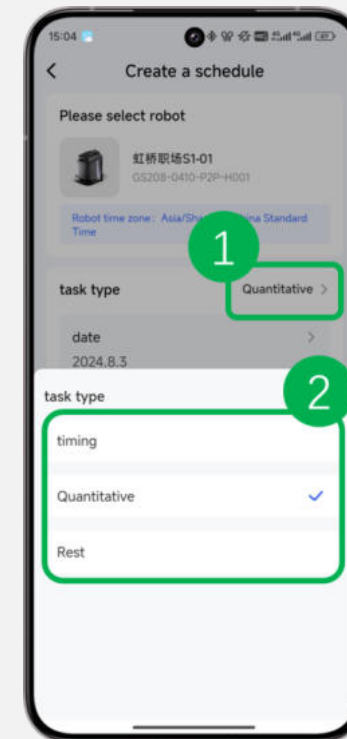
To set Do Not Disturb mode, select "Breaks" as the scheduling option when creating the schedule.



Tap "Task Schedule" .



Tap the icon in the top right corner.



1. Tap "Task Type."
2. Choose "Quantity," "Time," or "Break."
Quantity: Set the start time and the number of cycles.
Time: Set the start and end times.
Break: Set a time period during which the machine will enter Do Not Disturb mode.

4

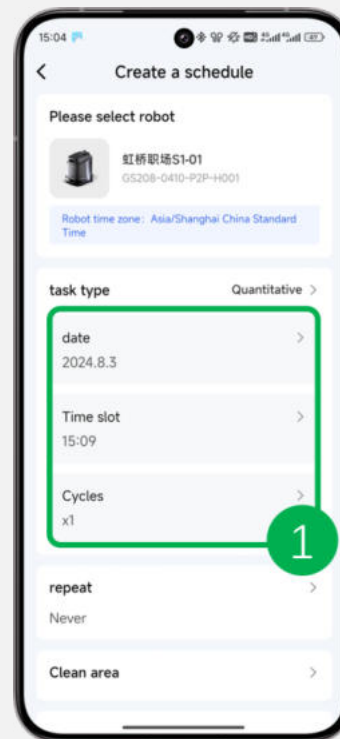
5

6

Create Schedules - Mobile App

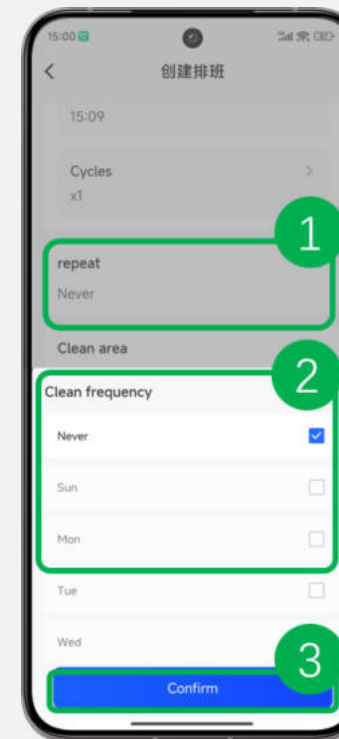
**Precautions:**

To set Do Not Disturb mode, select "Breaks" as the scheduling option when creating the schedule.



Set the date to start the scheduled task and specify the time period for the task execution.

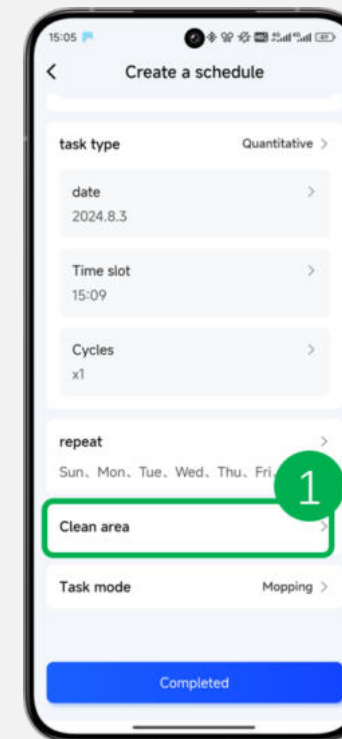
7



1. Tap "Repeat."
2. Select the days of the week.
3. Tap "Confirm" to set the scheduling task's repeat cycle by the week.

Never: The scheduled task will not repeat and will only be executed once on the specified start date.

8



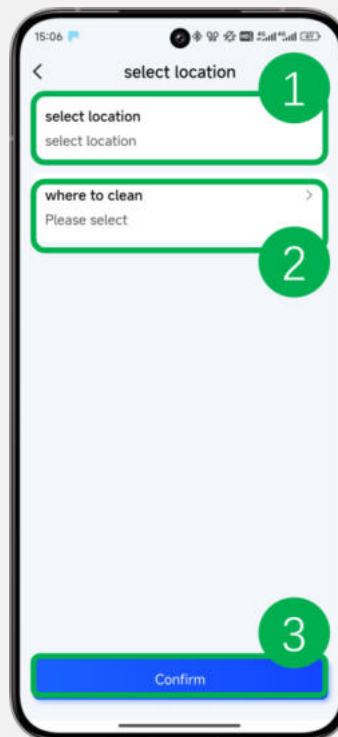
Tap "Cleaning Location."

9

Create Schedules - Mobile App

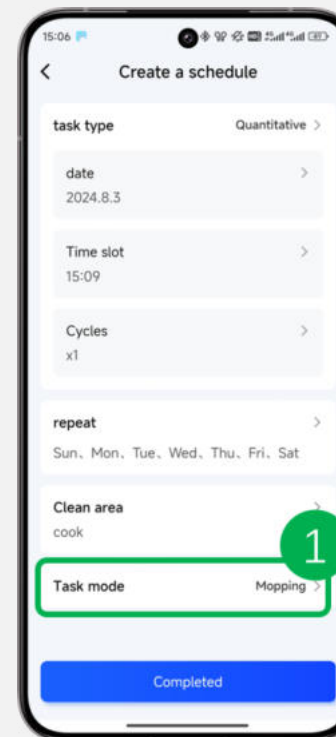
**Precautions:**

To set Do Not Disturb mode, select "Breaks" as the scheduling option when creating the schedule.



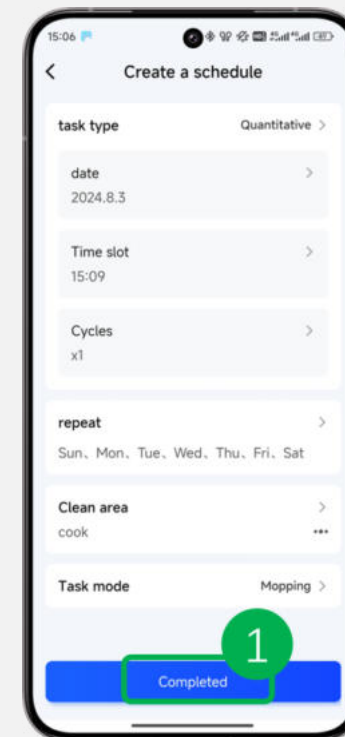
1. Tap "Choose a Location" and choose the map for the scheduled task.
2. Tap "Where to Clean" and select the areas to be cleaned for the scheduled task; multiple selections are allowed.
3. Tap "Confirm."

10



Tap "Mode" to configure the cleaning mode for the scheduled task.

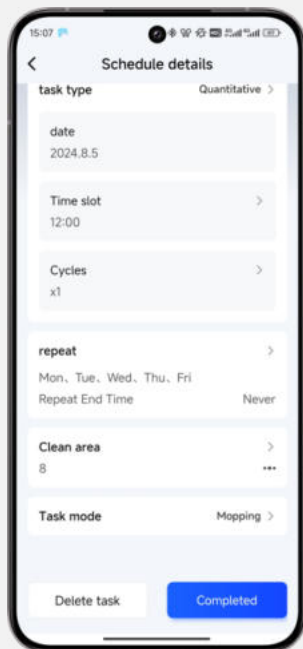
11



Tap "Completed" to complete the setup of the scheduled task.

12

Delete/Edit Schedules - Mobile App

**Precautions:**

To set Do Not Disturb mode, select "Breaks" as the scheduling option when creating the schedule.



1. Tap "Robot."
2. In the list of your robots, find and select the corresponding robot.

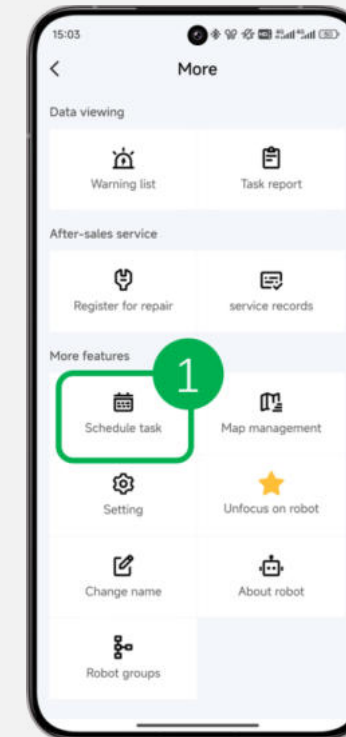
If the robot is not listed, please contact Gausium's after-sales engineer.

1



Tap the icon in the top right corner.

2



Tap "Task Schedule" .

3

Appearance

Startup

Shutdown

Manual
Move

Charging

Clean Water
DisposalWastewater
DrainageEmergency
StopManual
Mode

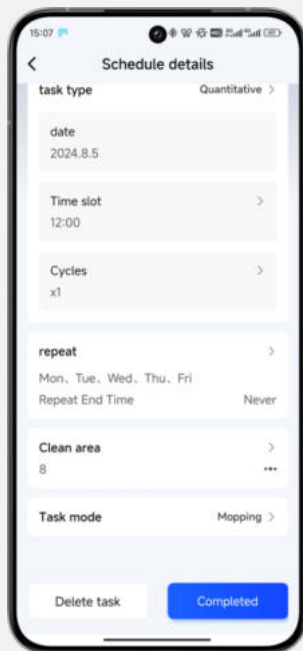
Auto Mode

Scheduling

Positioning
TransferView
Alarms

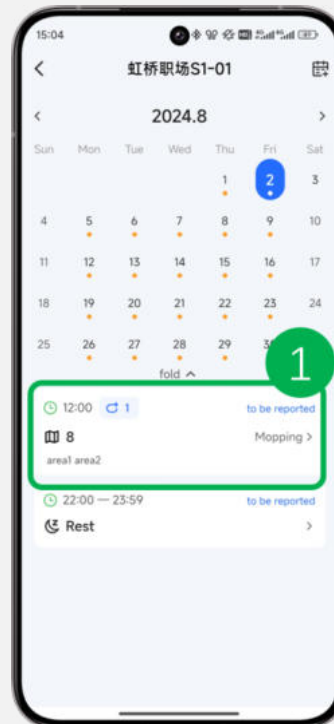
Scrubber 50 User Manual

Delete/Edit Schedules - Mobile App



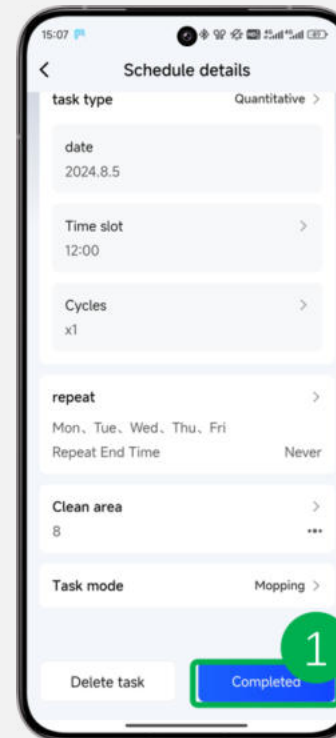
Precautions:

To set Do Not Disturb mode, select "Breaks" as the scheduling option when creating the schedule.



In the schedule task calendar, find and tap the task you want to edit.

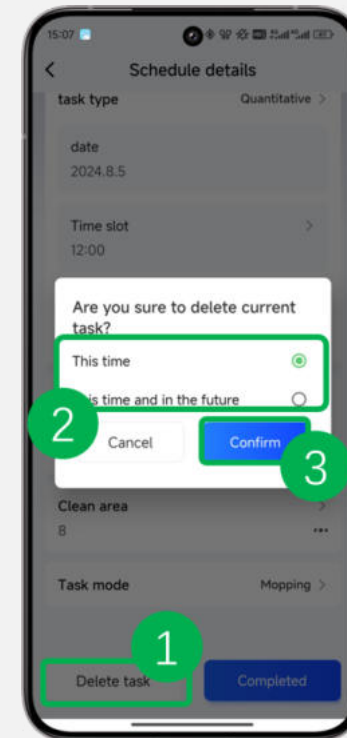
4



Edit:

Adjust the scheduled task settings as needed, then tap "Completed" after making the changes.

A



Delete:

1. Tap "Delete Task."
2. Choose to delete "This Task Only" or "This and All Future Tasks."
3. Tap "Confirm."

B

Appearance

Startup

Shutdown

Manual
Move

Charging

Clean Water
DisposalWastewater
DrainageEmergency
StopManual
Mode

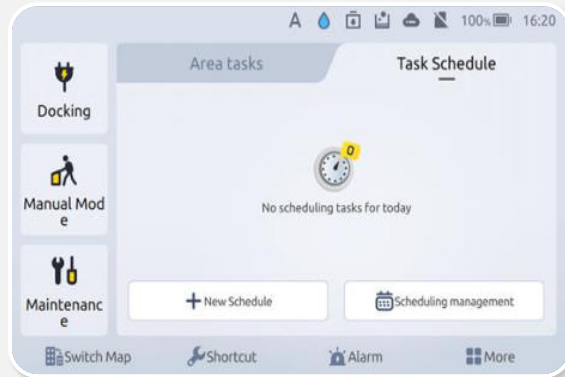
Auto Mode

Scheduling

Positioning
TransferView
Alarms

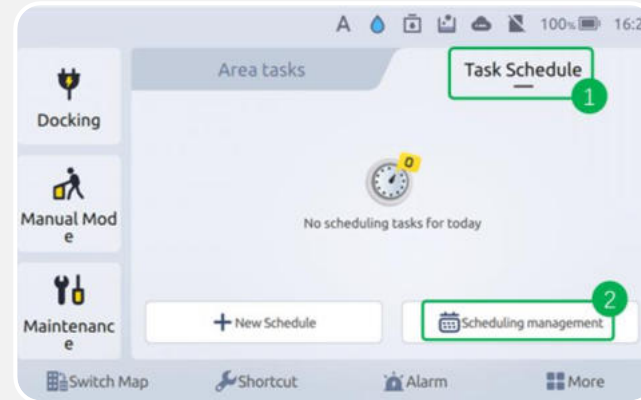
Scrubber 50 User Manual

Create Schedules - Touchscreen



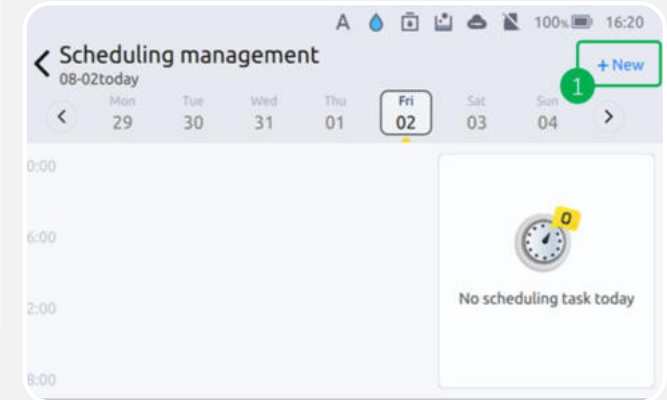
Precautions:

To set Do Not Disturb mode, select "Breaks" as the scheduling option when creating the schedule.



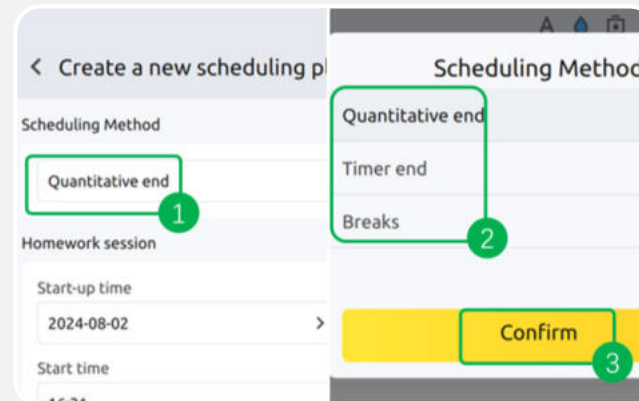
- ① Tap "Task Schedule".
- ② Tap "Scheduling Management".

1



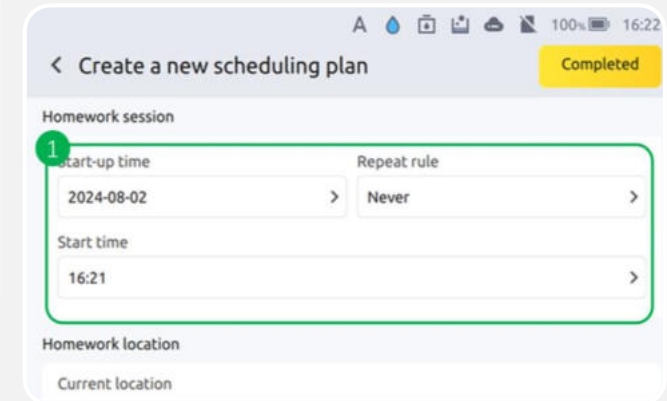
- ① Tap "New".

2



- ① Tap "Scheduling Method".
- ② Select a scheduling method.
- ③ Tap "Confirm."

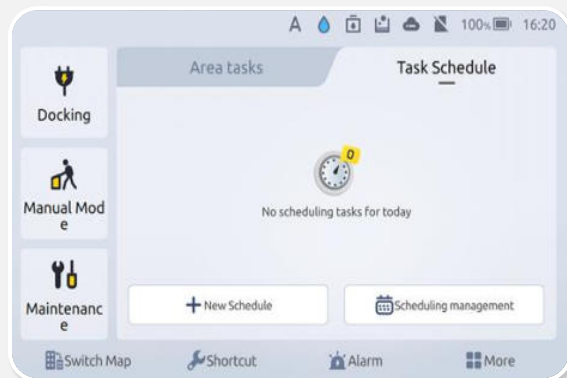
3



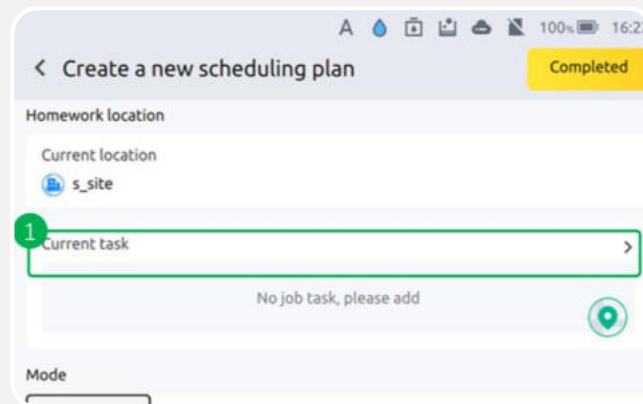
- ① Set the operation time period.

4

Create Schedules - Touchscreen

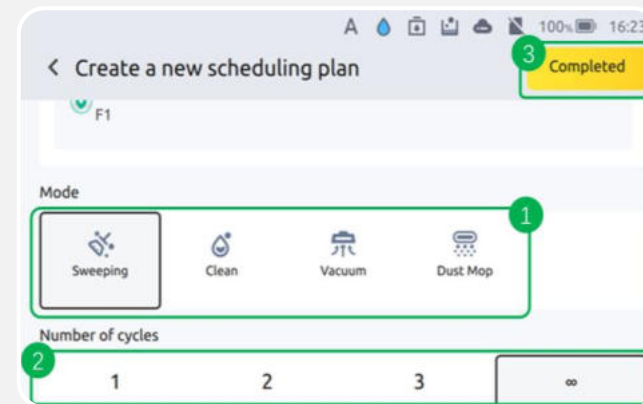
**Precautions:**

To set Do Not Disturb mode, select "Breaks" as the scheduling option when creating the schedule.



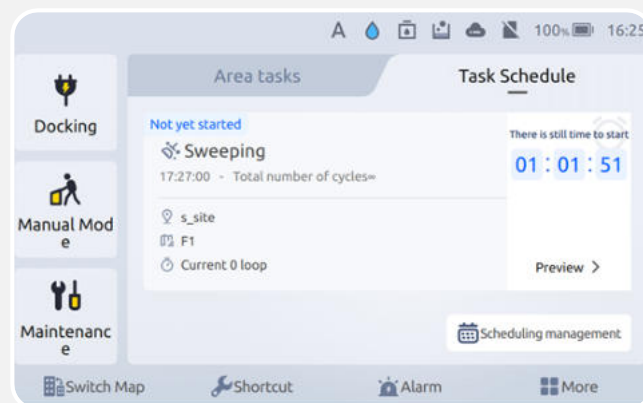
① Tap "Current Task" to add cleaning task areas.

5



① Set the operation mode.
② Set the number of cycles.
③ Tap "Completed."

6



The task scheduling is complete.

7

8

Appearance

Startup

Shutdown

Manual
Move

Charging

Clean Water
DisposalWastewater
DrainageEmergency
StopManual
Mode

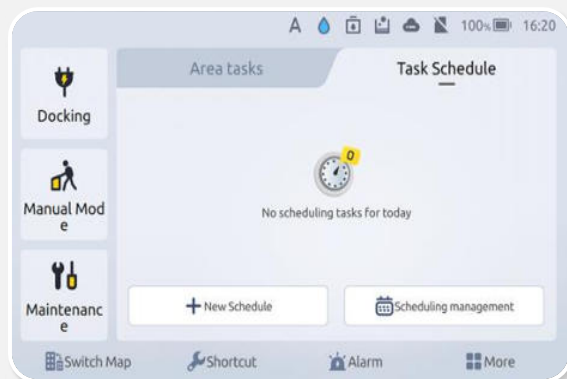
Auto Mode

Scheduling

Positioning
TransferView
Alarms

Scrubber 50 User Manual

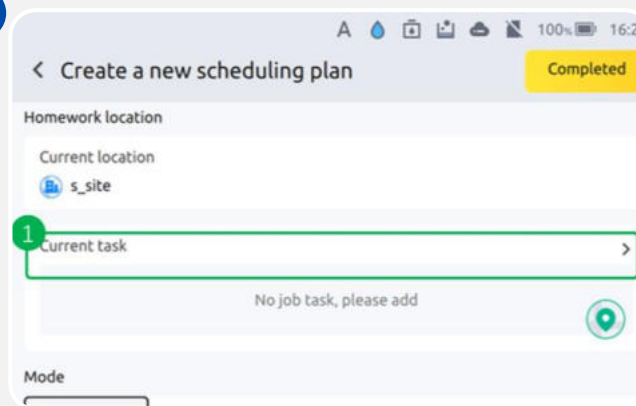
Delete/Edit Schedules - Touchscreen



Precautions:

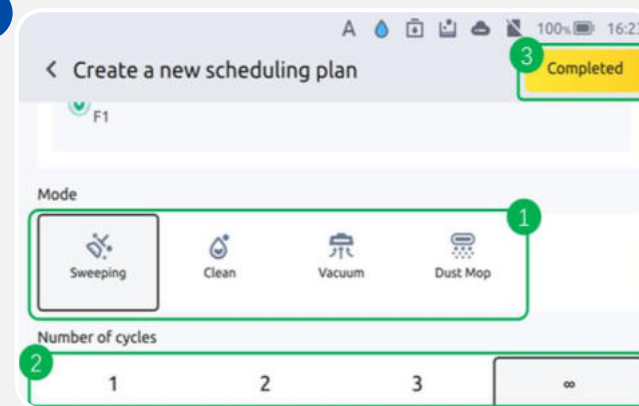
To set Do Not Disturb mode, select "Breaks" as the scheduling option when creating the schedule.

1



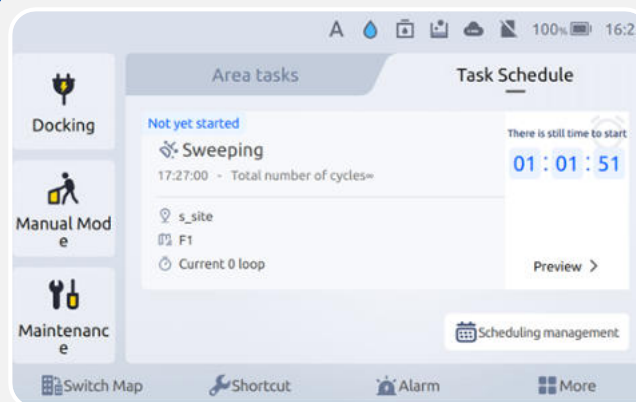
- ① Tap "Current Task" .
- ② Tap "Scheduling Management" .

2



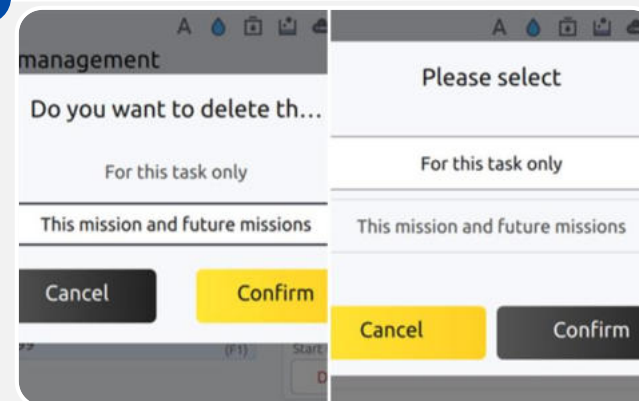
- ① Tap the scheduled task you want to edit or delete.

3



- Ⓐ Delete the scheduled task.
- Ⓑ Edit the scheduled task.

4

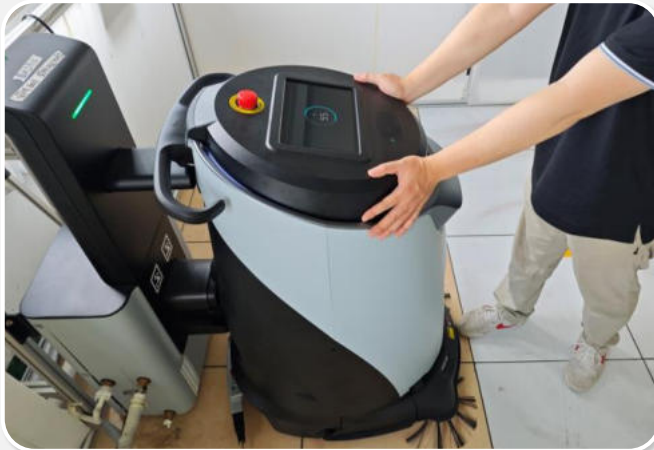


When editing or deleting a scheduled task, you need to select the range of changes: either "This Task Only" or "This and All Future Tasks."

Positioning Transfer

After manual transfer or a loss of positioning, the machine requires manual assistance to complete positioning initialization;
Scrubber 50 supports three methods for positioning initialization.

Method 1: Manual Docking



Method 2: Move to a Specified Location



Method 3: Scan QR Code

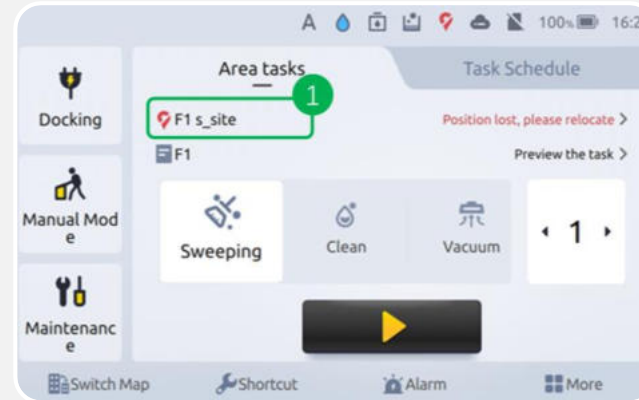


Manual Docking



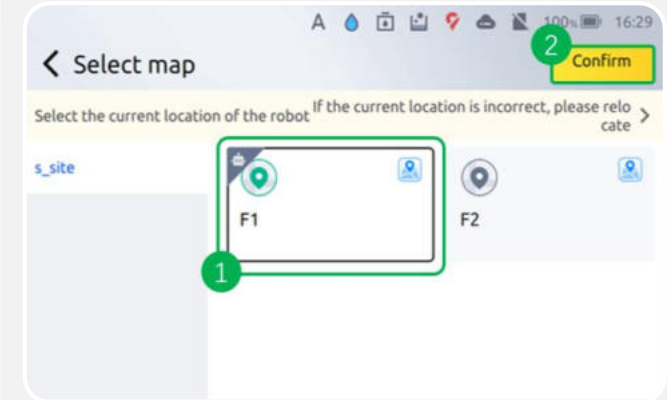
Precautions:

To use this positioning method, a charging dock/workstation must be deployed on the corresponding map of the current location.



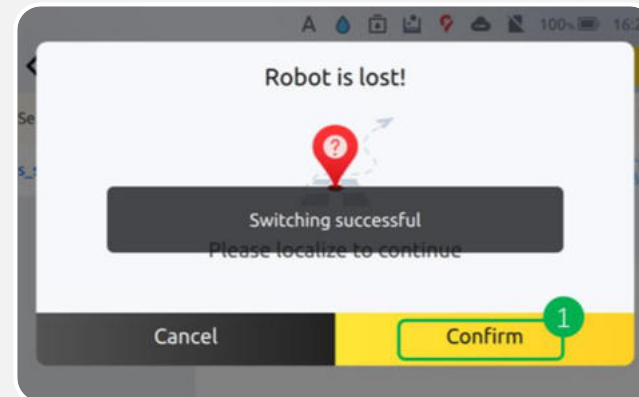
If positioning issues occur or after the machine completes a manual transfer, tap "Position Lost, Please Relocate."

1



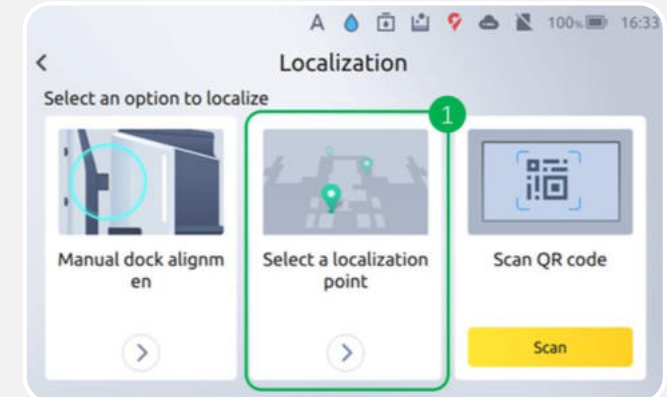
1. Select the map that corresponds to the machine's current actual location.
2. Tap "Confirm."

2



When seeing "Robot is Lost" on the screen, tap "Confirm."

3



Tap "Manual Docking."

4

Appearance

Startup

Shutdown

Manual
Move

Charging

Clean Water
DisposalWastewater
DrainageEmergency
StopManual
Mode

Auto Mode

Scheduling

Positioning
TransferView
Alarms

Scrubber 50 User Manual

Manual Docking



Precautions:

To use this positioning method, a charging dock/workstation must be deployed on the corresponding map of the current location.

5



Manually move the machine to the charging dock/workstation.

6



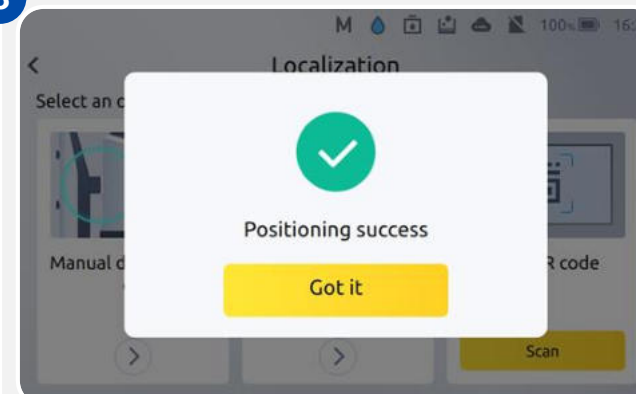
Rotate the machine to align its charging electrodes with those of the charging dock/workstation.

7



Move the machine so that its charging electrodes make contact with the charging dock/workstation electrodes. Release once the light strip on the charging dock/workstation turns green.

8



When a successful positioning message appears on the screen and you hear the machine's voice prompt saying, "Positioning Success," it indicates that the machine has successfully completed positioning initialization.

Appearance

Startup

Shutdown

Manual
Move

Charging

Clean Water
DisposalWastewater
DrainageEmergency
StopManual
Mode

Auto Mode

Scheduling

Positioning
TransferView
Alarms

Scrubber 50 User Manual

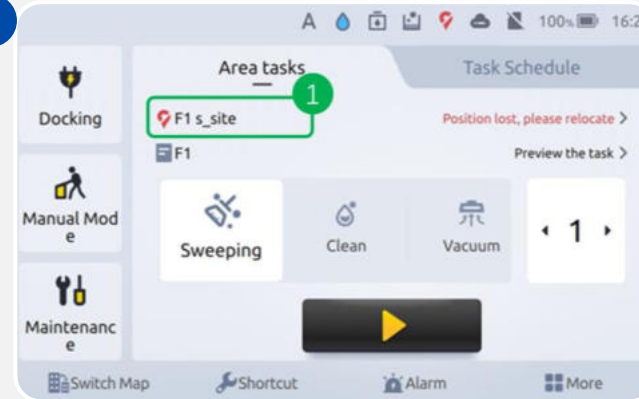
Move to a Specified Location



Precautions:

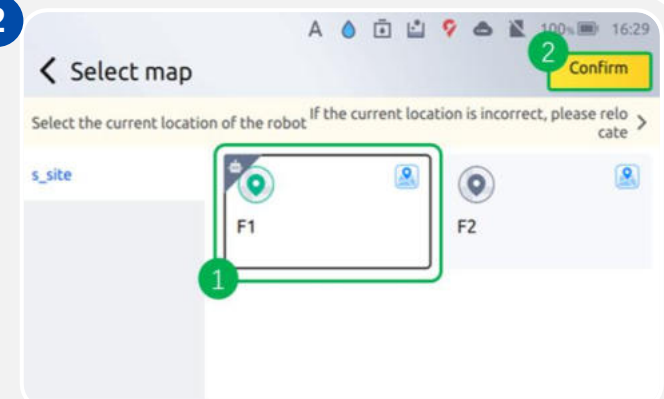
To use this positioning method, ensure that the corresponding map of the current location includes designated points for positioning.

1



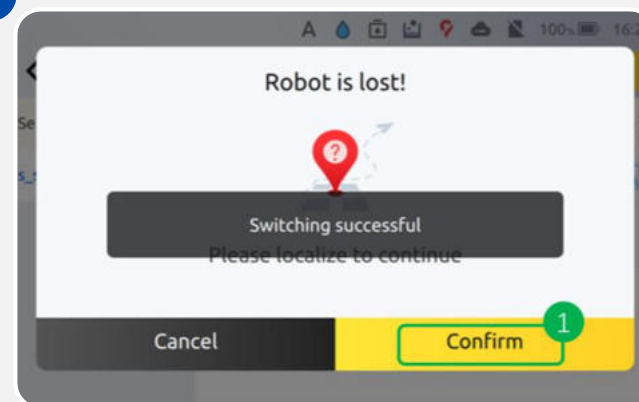
If positioning issues occur or after the machine completes a manual transfer, tap "Position Lost, Please Relocate."

2



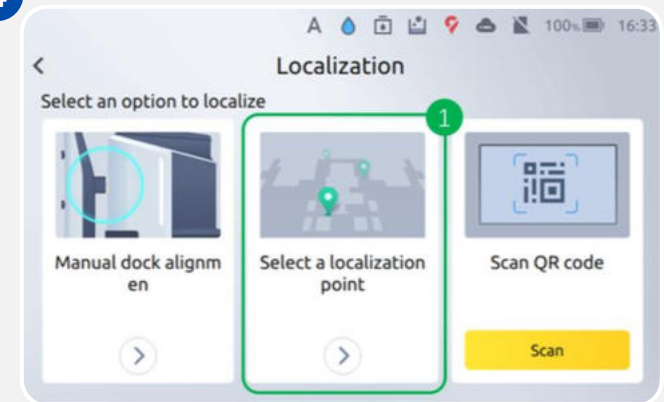
1. Select the map that corresponds to the machine's current actual location.
2. Tap "Confirm."

3



When seeing "Robot is Lost" on the screen, tap "Confirm."

4



Tap "Select a Localization Point" .

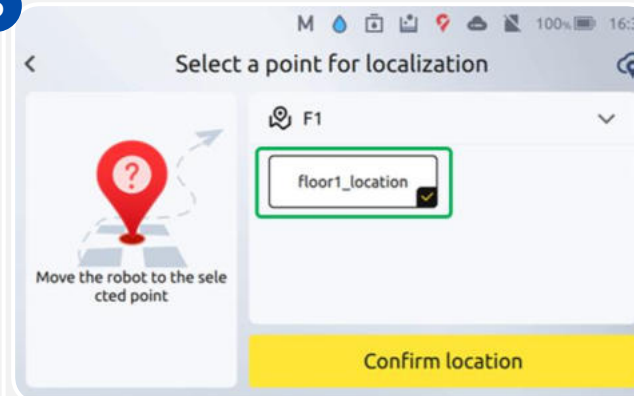
Move to a Specified Location



Precautions:

To use this positioning method, ensure that the corresponding map of the current location includes designated points for positioning.

5



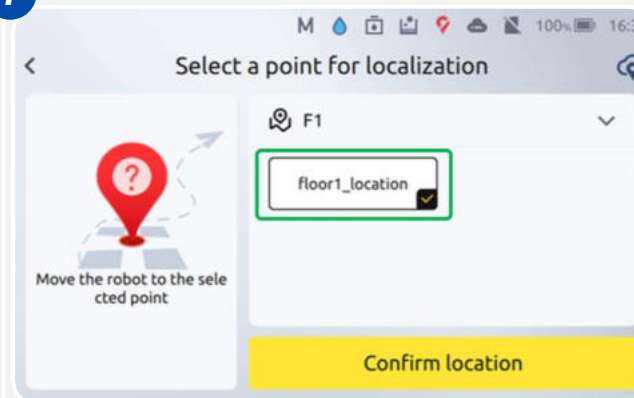
Select the designated point for positioning.

6



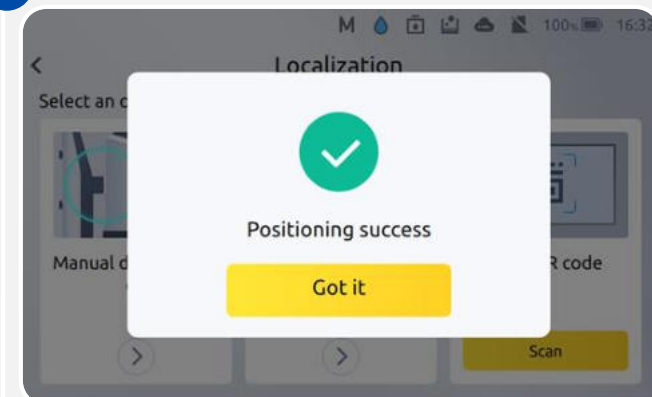
Move the machine near the actual location corresponding to the designated point.

7



Once the machine reaches the designated location, tap "Confirm Location" on the screen.

8



When a successful positioning message appears on the screen and you hear the machine's voice prompt saying, "Positioning Success," it indicates that the machine has successfully completed positioning initialization.

Appearance

Startup

Shutdown

Manual
Move

Charging

Clean Water
DisposalWastewater
DrainageEmergency
StopManual
Mode

Auto Mode

Scheduling

Positioning
TransferView
Alarms

Scrubber 50 User Manual

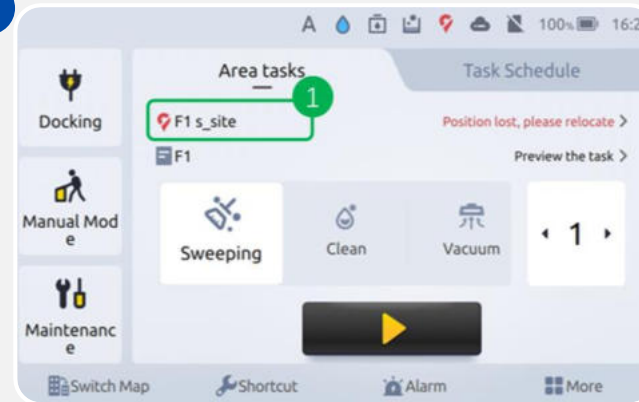
Scan QR Code



Precautions:

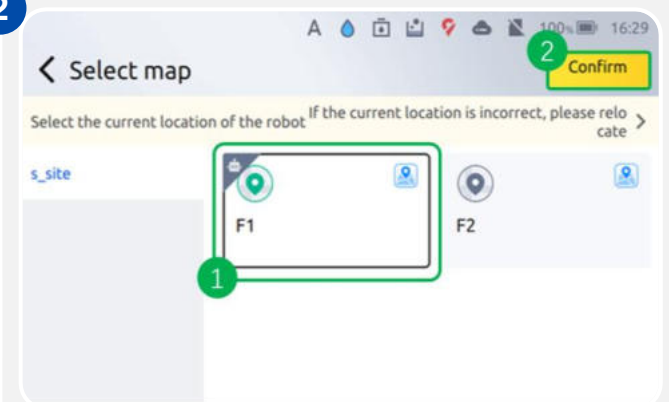
To use this positioning method, the corresponding map of the current location must have QR code points deployed.

1



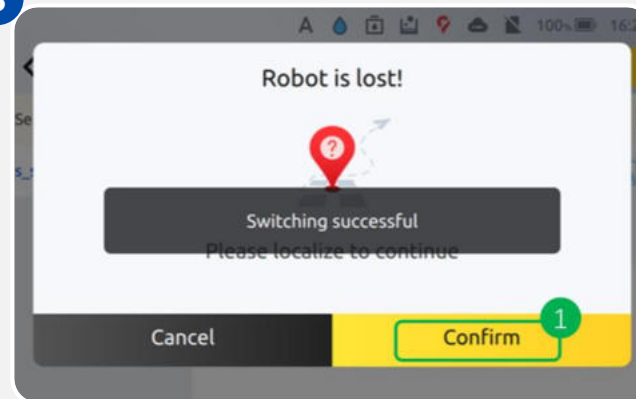
If positioning issues occur or after the machine completes a manual transfer, tap "Position Lost, Please Relocate."

2



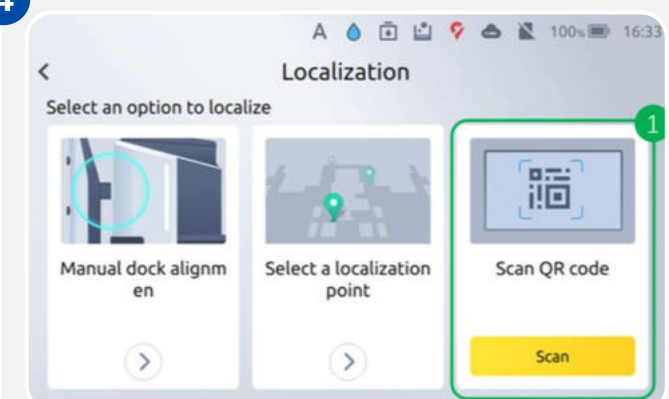
1. Select the map that corresponds to the machine's current actual location.
2. Tap "Confirm."

3



When seeing "Robot is Lost" on the screen, tap "Confirm."

4



Select "Scan QR Code."

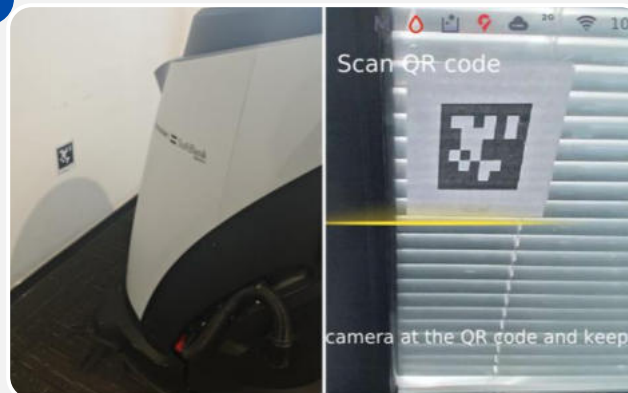
Scan QR Code



Precautions:

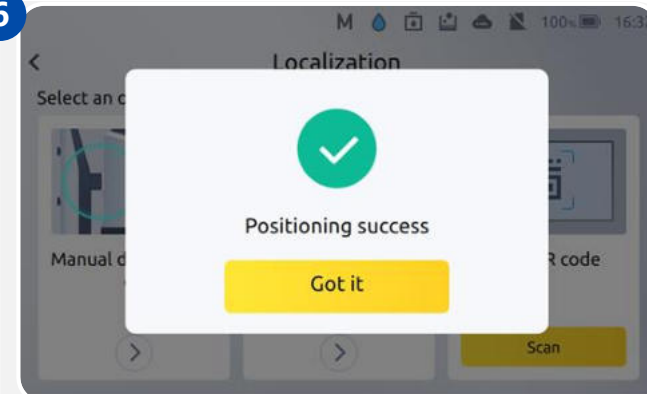
To use this positioning method, the corresponding map of the current location must have QR code points deployed.

5



Move the machine directly in front of the QR code, positioning it 20-30 cm away, and ensure the QR code is centered on the machine's screen.

6



After the machine scans the QR code, a successful positioning message will appear on the screen, and you will hear the machine's voice prompt saying, "Positioning Success," indicating that the machine has successfully completed positioning initialization.

Appearance

Startup

Shutdown

Manual
Move

Charging

Clean Water
DisposalWastewater
DrainageEmergency
StopManual
Mode

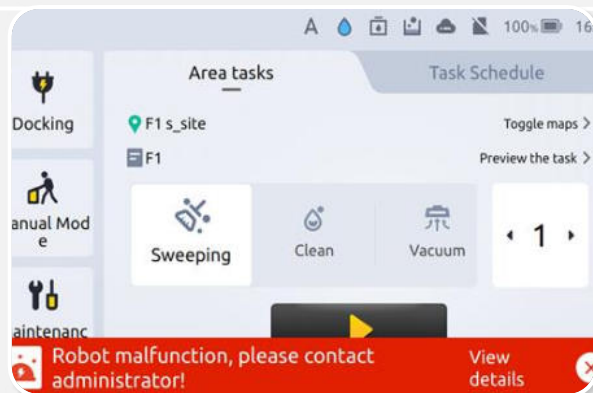
Auto Mode

Scheduling

Positioning
TransferView
Alarms

Scrubber 50 User Manual

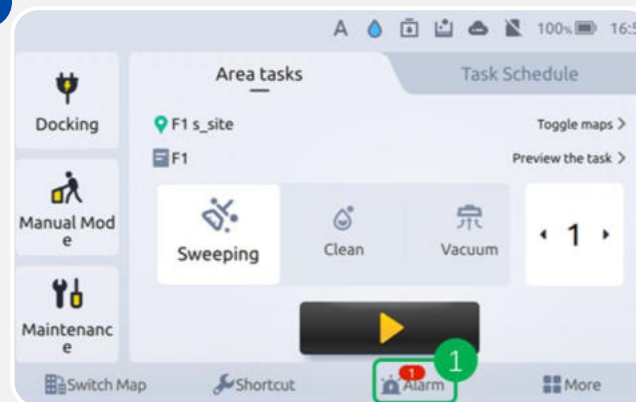
View Alarms



Precautions:

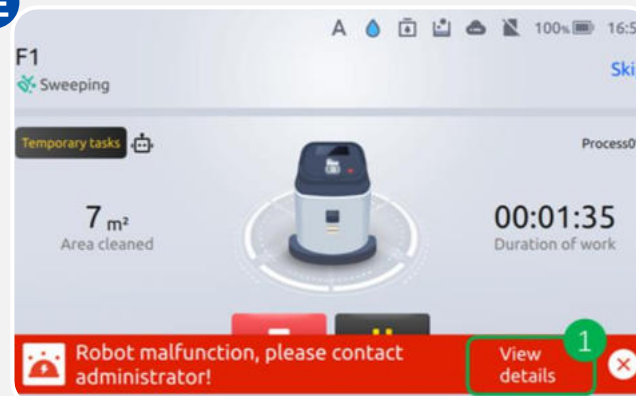
If the alarm cannot be resolved using the provided solutions, please promptly contact a Gausium engineer.

1



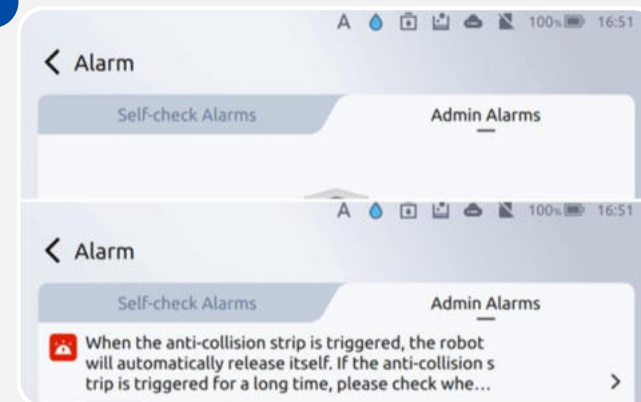
If the screen is locked, log in with your password first, then tap "Alarm" in the bottom corner.

注



When the machine encounters an alarm, a red popup will appear at the bottom of the screen. Tap "View Details" to quickly access the alarm information.

2



- 1.The machine is operating normally with no alarms.
- 2.The machine has encountered an issue and shows an alarm message.

Robolution by Gausium