



Vacuuming mode
The required cleaning items are identified in red



Dust-mopping mode
The required cleaning items are identified in green



Scrubbing mode
The required cleaning items are identified in purple



Sweeping mode
The required cleaning items are identified in yellow

Clean the interior

Clean the air filter element

- After shutting down, turn up the machine head cover.
- Open the cover plate of the air filter element.
- Remove the dust from the filter element and reinstall it.



Clean up the dust container

- Turn up and remove the dust box cover plate.
- Pull up the dustproof plate and take out the dust container.
- Pull out the sealing strip, empty the dust container and reinstall it.



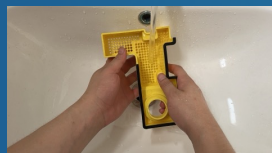
Clean the water tank

- Pull up handle of the water tank and carry it out.
- Remove the cover plate of the water tank and take out the filter basket.
- After draining out the water tank, rinse the water tank.



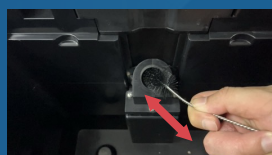
Clean the filter basket

- Take out the yellow filter basket in the water tank.
- Dump the debris and rinse it.
- Reinstall it and put the cover back on.



Rinse the suction pipe

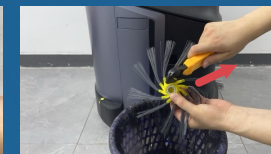
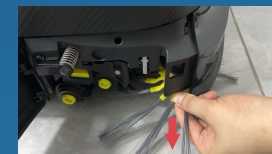
- Insert water hose into waste suction pipe opening.
- Turn on the faucet to flush the suction pipe.
- The pipe wall can also be scrubbed with a drain auger.



Clean the bottom

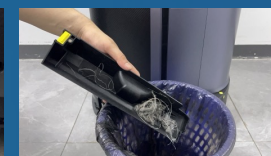
Clean side brushes

- Pinch the root of the side brush by hand and pull down the lower side brush.
- Use a cutter to clean the entangled hair.
- Hold the side brush and reinstall it.



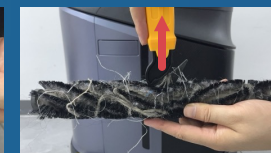
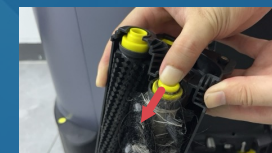
Clean the debris tray

- Open the left lid.
- Press the yellow button to pull out the debris tray.
- Empty the trash, then push the debris tray back and close the lid.



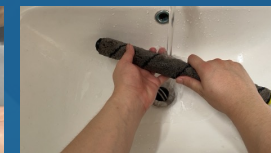
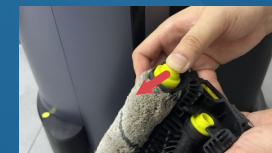
Clean roller brush (Scrubbing brush)

- Open the right lid and press the yellow button to take out the roller brush box.
- After taking out the front and rear brushes, clean them with a cutter.
- Put the brush into the roller brush box and put on the lid.



Clean roller brush (Mop brush)

- Press and hold the two yellow buttons while pushing them downward to remove the squeegee cover.
- Cloth brushes need to be washed and fully dried.
- Put the cloth brush into the roller brush box, push it and close the lid.



Clean the squeegee

- Press and hold the two yellow buttons while pushing them downward to remove the squeegee cover.
- After pressing the button as shown in the picture, pull out the blade from the side and wipe it clean.
- Press the button again and reinstall the squeegee blade and put the rear cover back on.





Vacuuming mode
The required cleaning items are identified in red



Dust-mopping mode
The required cleaning items are identified in green



Scrubbing mode
The required cleaning items are identified in purple



Sweeping Mode
The required cleaning items are identified in yellow

Clean the exterior



Wipe the exterior

- Use a slightly damp cloth to wipe the external part of the machine from top to bottom.



Clean the rear drive wheel

- Press and hold the two yellow buttons while pushing them downward to remove the squeegee cover.
- Push the robot forward constantly while cleaning the rear drive wheels.



Wipe the sensors

- Prepare a clean and soft cloth.
- Wipe the front and rear cameras in turns.
- Wipe the front anti-collision cover and the both sides of the robot.



Wipe the head cover panel

- Use a slightly damp cloth and wipe the panel from inside to outside.



Wipe the charging dock

- Disconnect the power to the charging dock first.
- Use a slightly damp cloth to wipe the charging dock.
- Avoid wiping on the charging contacts.

