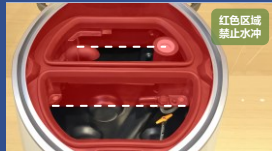
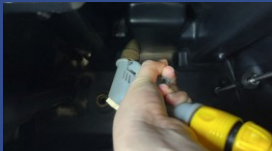


## Clean the Interior

### Rinse the Water Tank

- Place the water gun in the clean water tank and turn on the tap.
- Rinse the tank walls and the level gauge.
- Lift the pull rod to allow the remaining water to enter the wastewater tank.
- Turn off the tap and place the water gun inside the wastewater tank.
- Rinse the wastewater tank walls and the level gauge.
- Turn off the tap and remove the water gun.
- Drain the water using the drainage pipe, and then secure cap tightly.
- Only rinse the part of the tank up to 10 cm below the upper edge.
- Do not rinse the waterproof seal ring of the tank.



### Clean the Suction Pipe

- Take out the rubber suction pipe from the tank.
- Insert the water gun into the upper opening of the suction pipe for rinsing.
- Reattach the rubber suction pipe after rinsing.



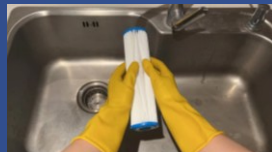
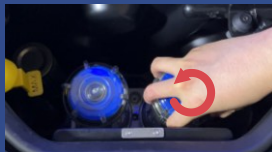
### Clean the Filter Basket

- Lift the robot's head cover and take out the filter basket.
- Empty the debris from the filter basket and rinse it with clean water.
- After rinsing the water tank, reinstall the filter basket.



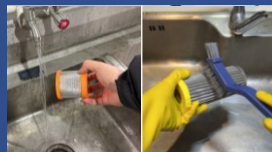
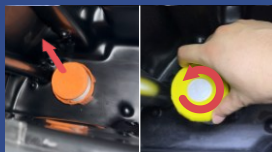
### Clean the Filter Bottle

- Twist counterclockwise to remove the two filter bottles.
- Take out the filter elements and rinse with clean water.
- Reassemble and reinstall the filter bottles after tank rinse.



### Clean the Mesh Filter

- Turn the clean water tank mesh filter counterclockwise to remove it.
- Pull out the wastewater tank mesh filter, remove any visible dirt, and rinse it with clean water.
- After rinsing the tanks, reinstall the mesh filters.



### Clean the Disc Brushes

- Press and push down the nut to remove the disc brushes.
- Use a stiff brush to clean the edges and remove debris.
- Lift the skirt edge and securely attach the disc brushes back.



### Clean the Squeegee

- While pressing the nut, pull out the squeegee rubber strips sideways and wipe them clean.
- Clean any foreign objects from the metal groove of the squeegee.
- Press the nut again and put back the squeegee rubber strips.



### Clean the Foam

- Open the head cover, and bend the HEPA fixing buckle to the right to open the HEPA cover, and then pull the HEPA filter outward.
- Gently tap the HEPA foam up and down to remove the dust inside, then reinstall it. **The foam should not be washed with water!**



### Cleaning the HEPA Filter

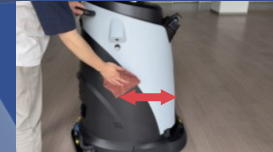
- Open the head cover, and bend the HEPA fixing buckle to the right to open the HEPA cover. Remove the HEPA.
- Gently tap the HEPA filter up and down to remove the dust inside, then reinstall it.
- The HEPA should not be washed with water!**



## Clean the Exterior

### Wipe the Robot's Exterior

- Prepare a wrung-out damp cloth.
- Wipe the exterior from top to bottom.



### Clean the Bottom Wheel Assembly

- If robot leaves wheel marks on the floor, use adhesive dust pads.
- Switch the robot to the manual mode.
- Slide back and forth on the dust pad to remove dust on the wheels.



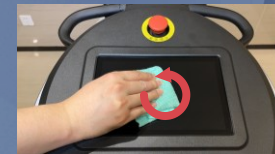
### Wipe the Sensors

- Prepare a clean, soft cloth.
- Wipe the front and rear lidars, as well as the left and right cameras.
- Wipe the overall collision shell and the top lidar area.



### Wipe the Head Cover Screen

- Use a clean and soft cloth.
- Wipe the screen in circles, moving from the inside to the outside.



### Clean the Workstation

- Disconnect power from the charging pile or workstation.
- Use a wrung-out damp cloth to wipe the exterior.
- Remove the foam from the water tray and rinse it.

